

Elegant residential complex in amazing location

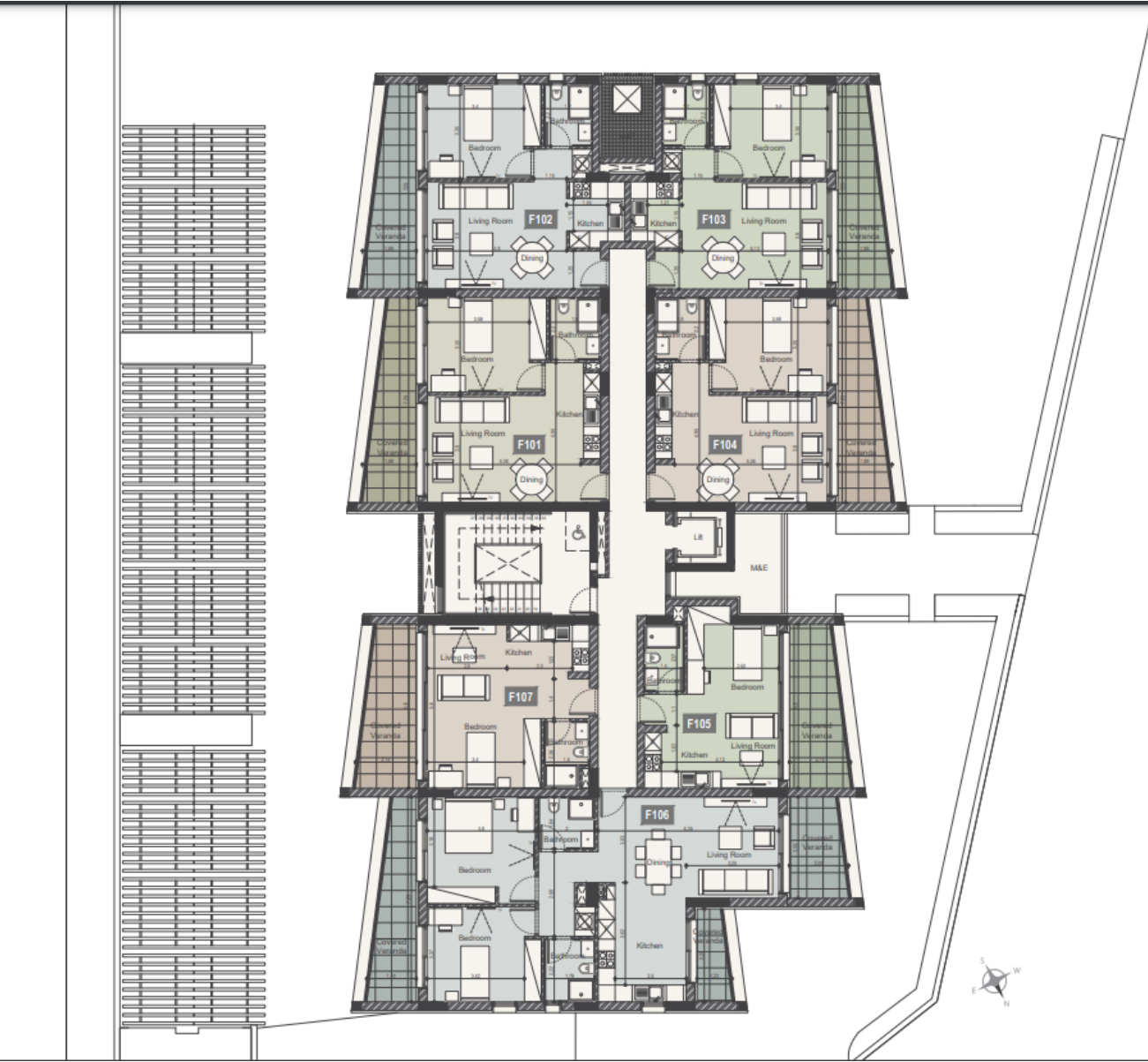
AD# : 17453

Master Plan

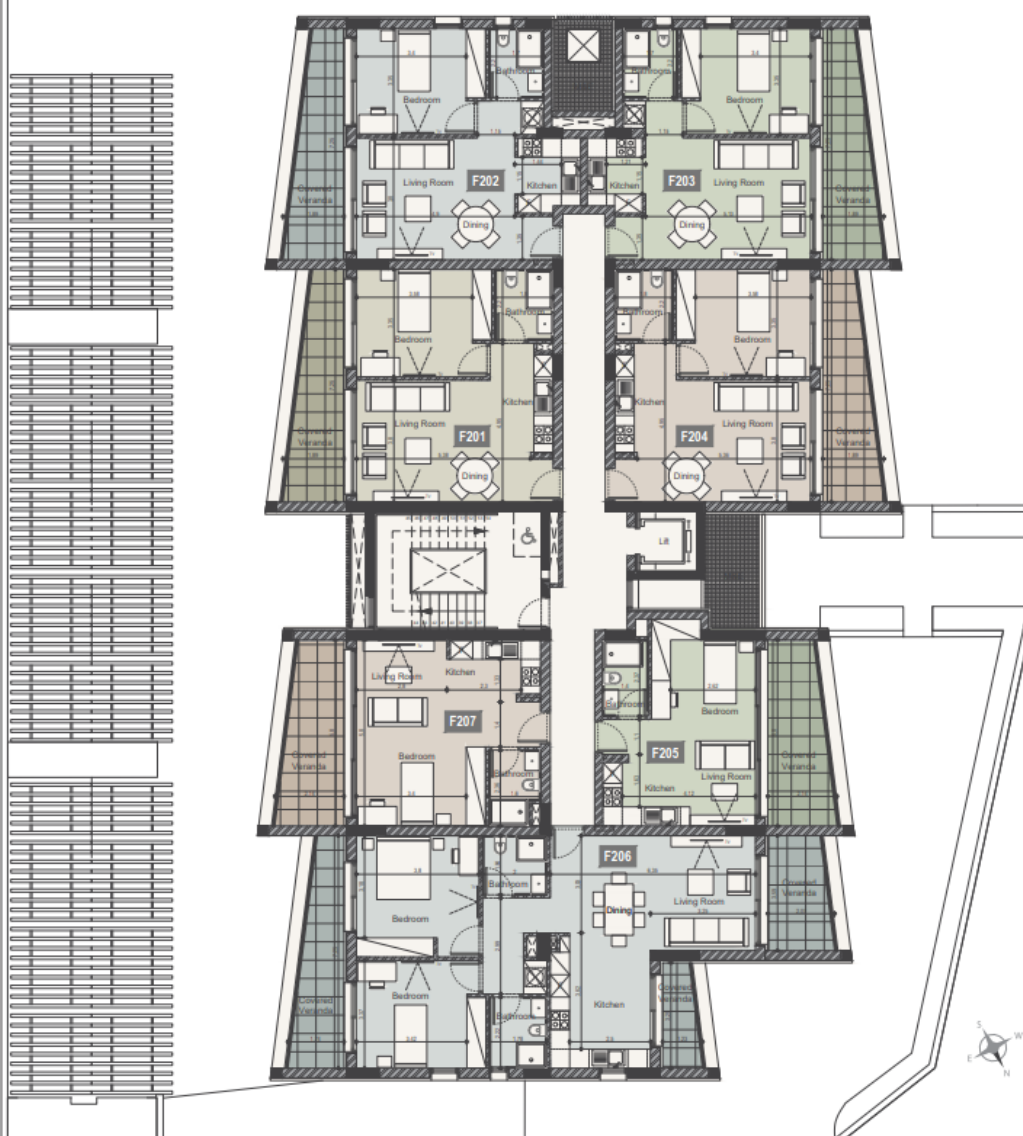


The site plan illustrates the proposed building layout and parking arrangement. The building is a multi-story structure with a central core containing a lobby, stairs, and elevators. The building is surrounded by parking spaces, with a total of 100 spaces indicated. The parking spaces are organized into several rows, with some spaces designated for specific vehicle types (e.g., car, van, truck). The building is situated on a lot with a curved boundary on the right side. A north arrow is located in the bottom right corner of the plan.

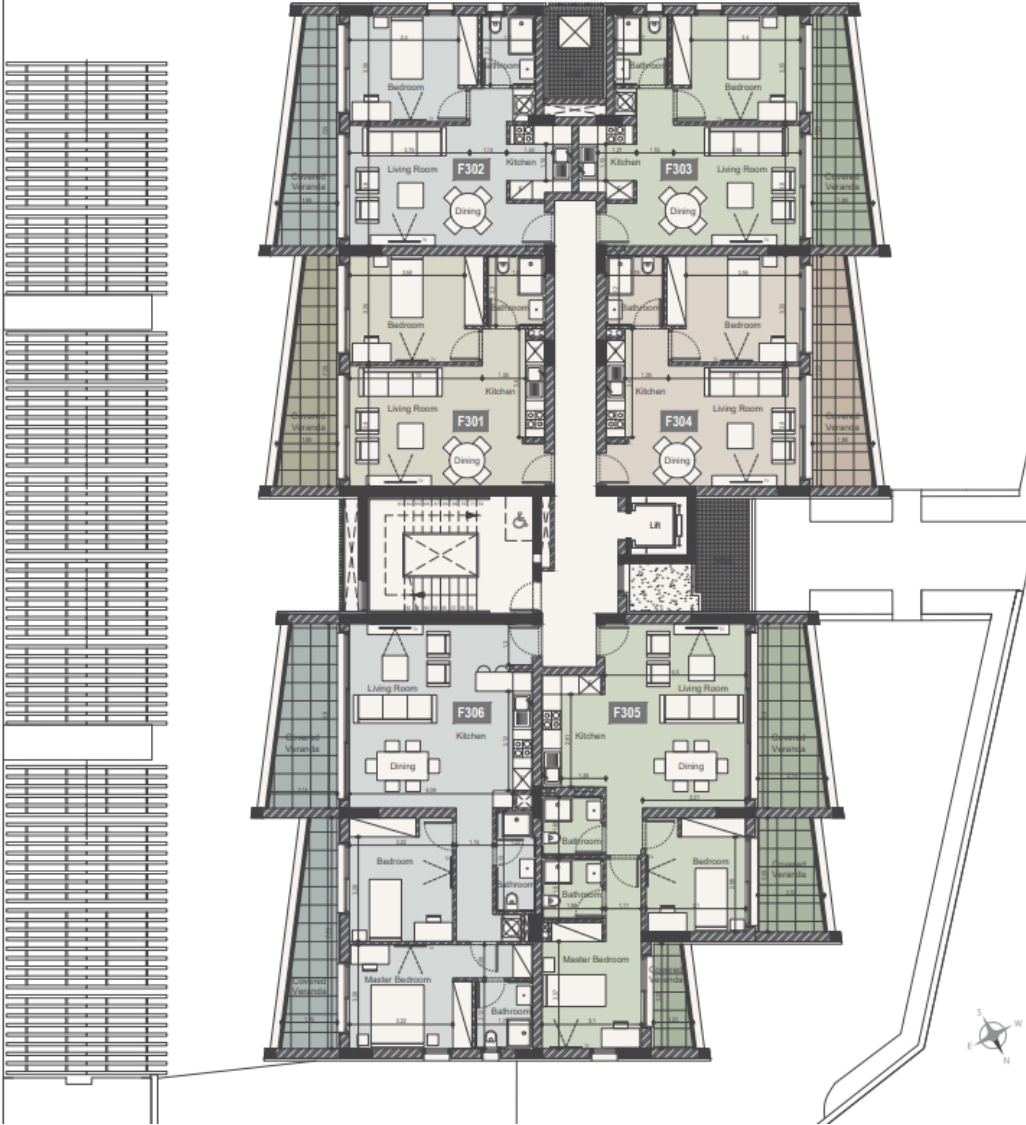
First Floor Plan



Second Floor Plan



Third Floor Plan



The floor plan illustrates the 1st floor of a building, featuring six residential units (F501-F506) and a central staircase. The units are arranged in two columns, with a central corridor and staircase area. The plan includes detailed room layouts, furniture placement, and dimensions. A north arrow is located in the bottom right corner.

**Unit Details:**

- F501:** Living Room, Kitchen, Dining, Bedroom, Bathroom.
- F502:** Living Room, Kitchen, Dining, Bedroom, Bathroom.
- F503:** Living Room, Kitchen, Dining, Bedroom, Bathroom.
- F504:** Living Room, Kitchen, Dining, Bedroom, Bathroom.
- F505:** Living Room, Kitchen, Dining, Bedroom, Bathroom.
- F506:** Living Room, Kitchen, Dining, Bedroom, Bathroom.

**Other Features:**

- Central Staircase and Corridor.
- Covered Veranda (left side).
- Open Veranda (right side).
- Master Bedroom (bottom right).
- Master Bathroom (bottom right).



Fifth Floor Plan

