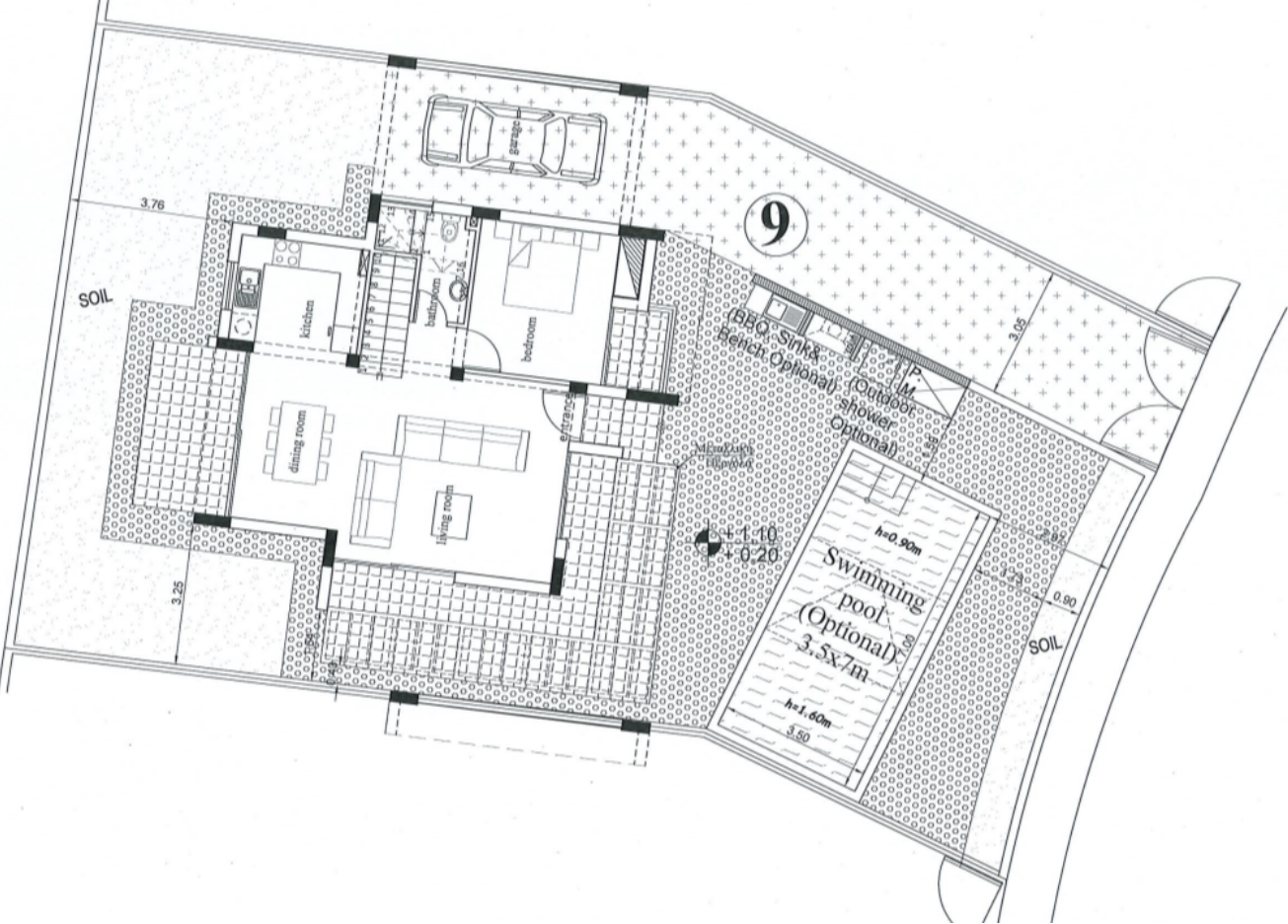


Elegant Villas in Cosmopolitan Location

AD# : 17538

Villa B1 Ground Floor Plans



The image displays two architectural floor plans for a house, labeled 'Ground Floor Plan B1' and '1st Floor Plan B1'. Both plans are oriented with a grid system (1-6 horizontally, A-F vertically) and include a metal pergola (Μεταλλική Πέργολα) on the left side.

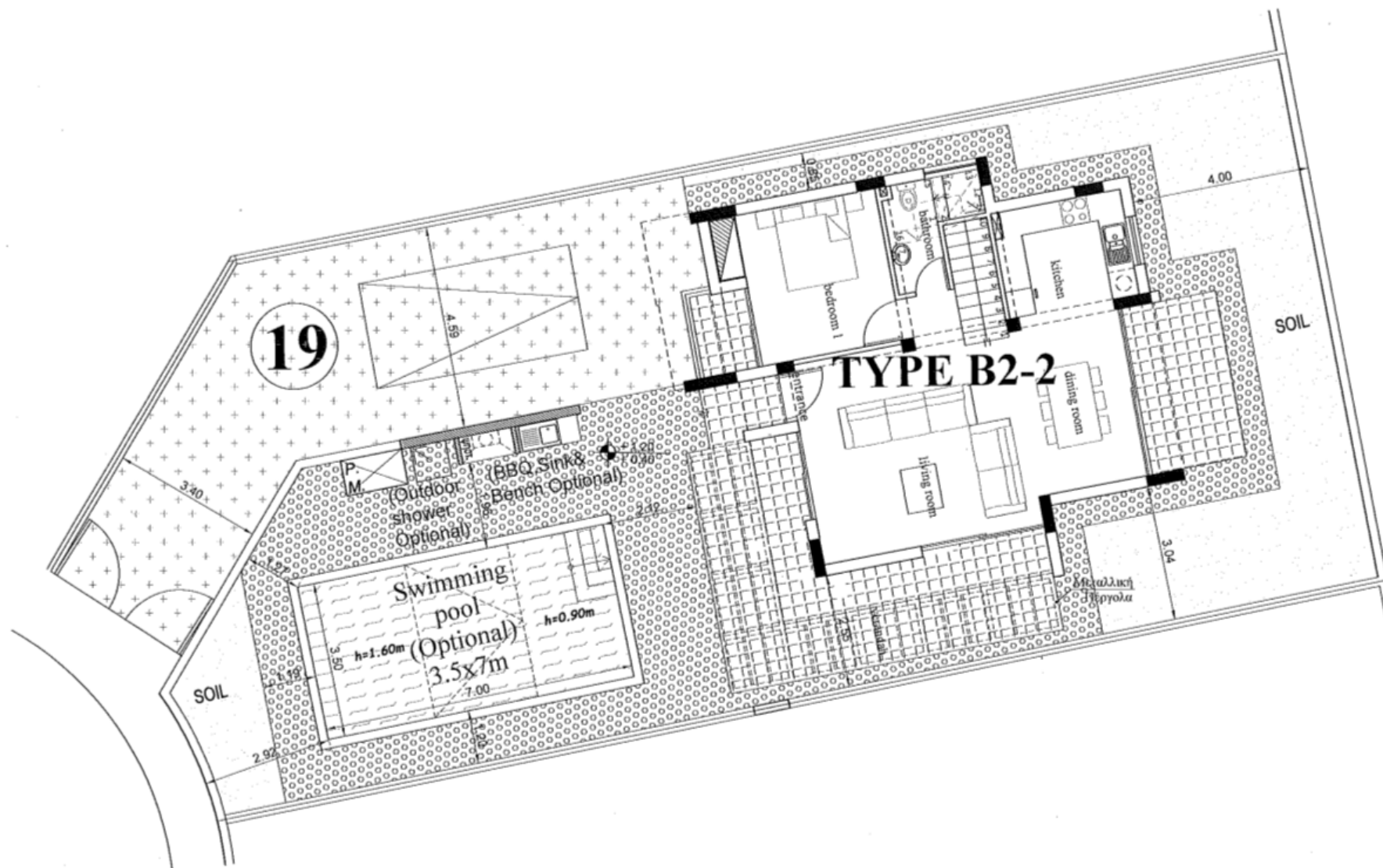
Ground Floor Plan B1: This plan shows a living room (7.50 x 4.55), a dining room (5.85 x 4.05), a kitchen (2.90 x 2.45), a bathroom (2.45 x 2.35), a bedroom (3.45 x 3.20), an entrance (1.10 x 2.5), and a garage (3.20 x 3.65). The overall dimensions are 11.80 x 10.65.

1st Floor Plan B1: This plan shows three bedrooms (3.35 x 3.95, 3.40 x 3.95, and 3.45 x 3.55), a bathroom (2.40 x 2.35), and a staircase (1.50 x 1.75). The overall dimensions are 11.80 x 10.65.

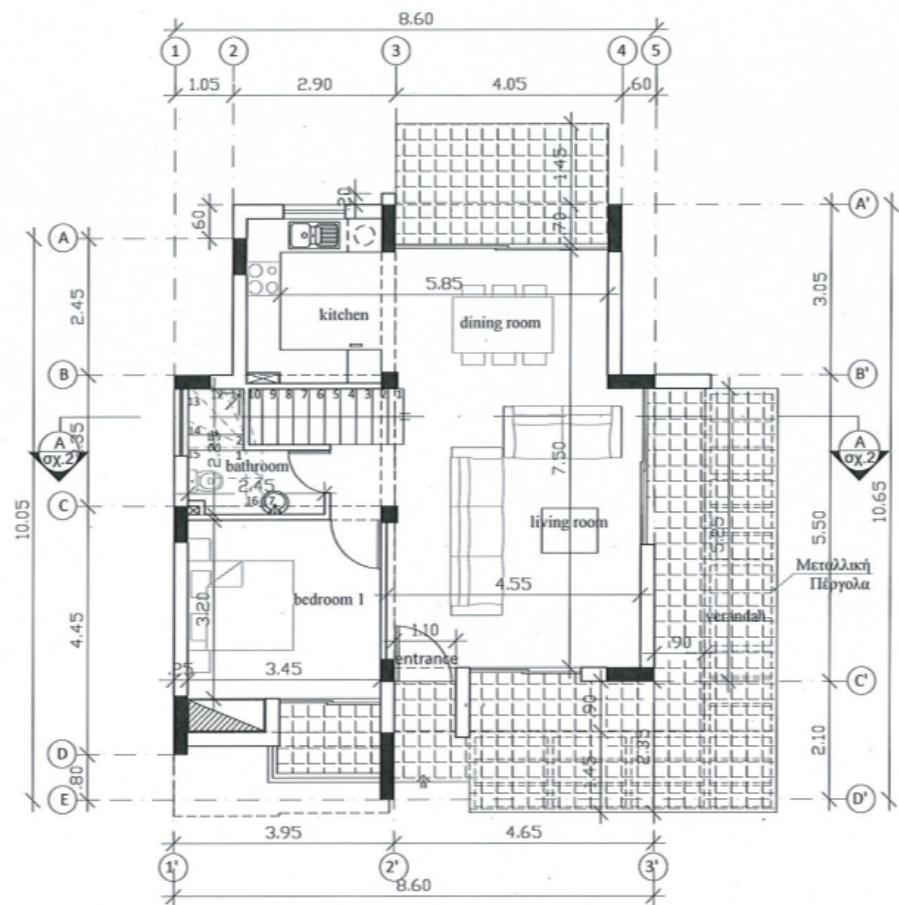
Ground Floor Plan B1

1st Floor Plan B1

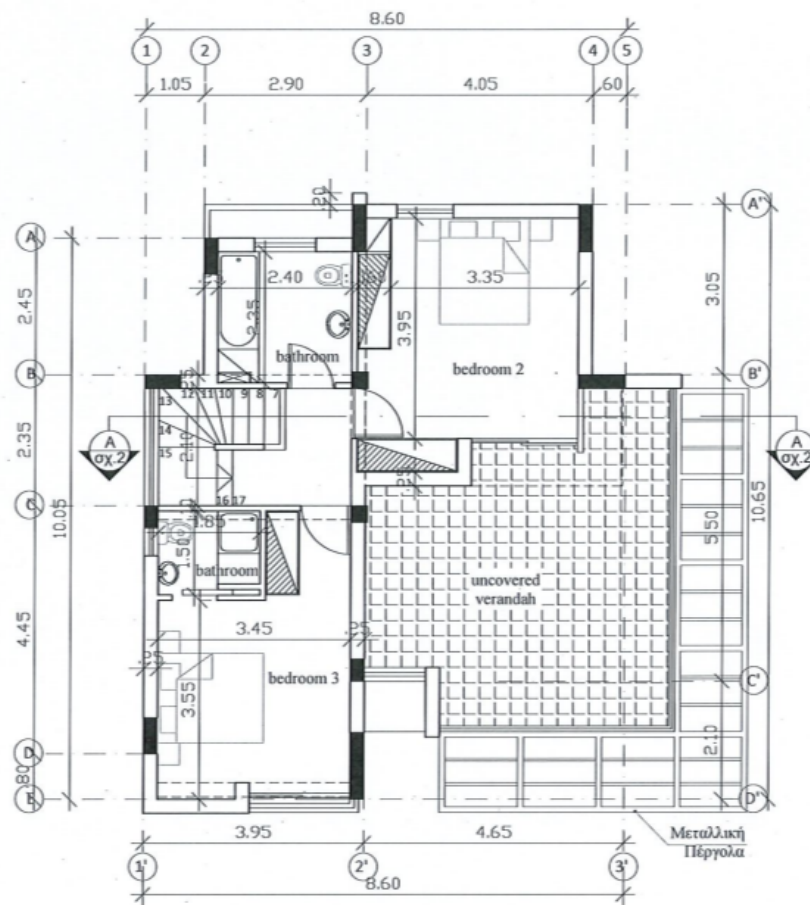
1



Villa B2-2 Ground and First Floor Plans



Ground Floor Plan B2-2



1st Floor Plan B2-2

Villa B2-1B Ground Floor Plans



The image displays two architectural floor plans for a building, labeled B2-1B.

Ground Floor Plan B2-1B: This plan shows a rectangular building footprint. The overall dimensions are 11.80m by 10.05m. The layout includes a garage (3.20m x 3.65m), a kitchen (3.20m x 2.45m), a dining room (5.85m x 3.05m), a living room (7.50m x 4.55m), two bedrooms (3.45m x 3.50m and 3.45m x 3.50m), a bathroom (2.45m x 2.45m), and a covered verandah (9.17m x 2.10m). The entrance is located on the right side. The plan is divided into sections by grid lines 1-6 and A-D.

1st Floor Plan B2-1B: This plan shows the first floor of the building. The overall dimensions are 11.80m by 10.05m. The layout includes three bedrooms (3.35m x 3.95m, 3.45m x 3.95m, and 3.55m x 3.95m), two bathrooms (2.40m x 2.40m and 2.40m x 2.40m), and an uncovered verandah (9.17m x 2.10m). The plan is divided into sections by grid lines 1-6 and A-D.

Ground Floor Plan B2-1B

1st Floor Plan B2-1B

Semeli Villas Complex Layout

15.	B1-2B	361,50	126,00	16,20	3BR	19,20
16.	B2-1B	343,20	126,00	16,20	3BR	19,20
17.	B2-1B	376,40	126,00	16,20	3BR	19,20
18.	B2-1B	406,45	126,00	16,20	3BR	19,20
19.	B2-2	331,05	126,00	16,20	3BR	-
20.	B1-4	361,05	126,00	16,20	3BR	24,00
		7307,55	2592,50			

