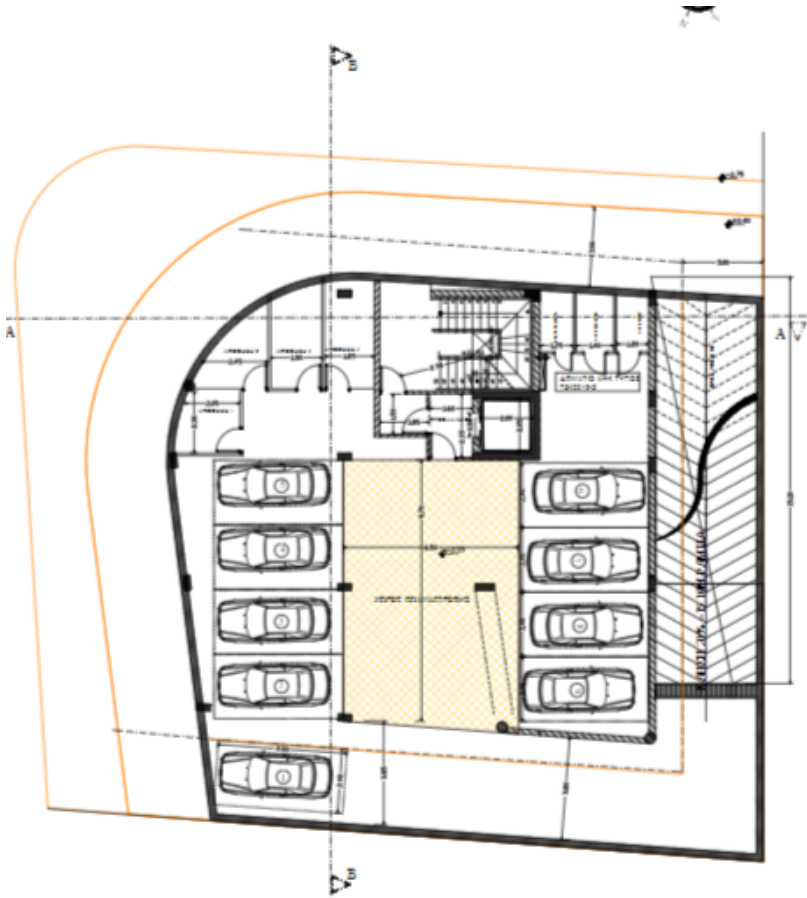


Ideally located superb Business Centre

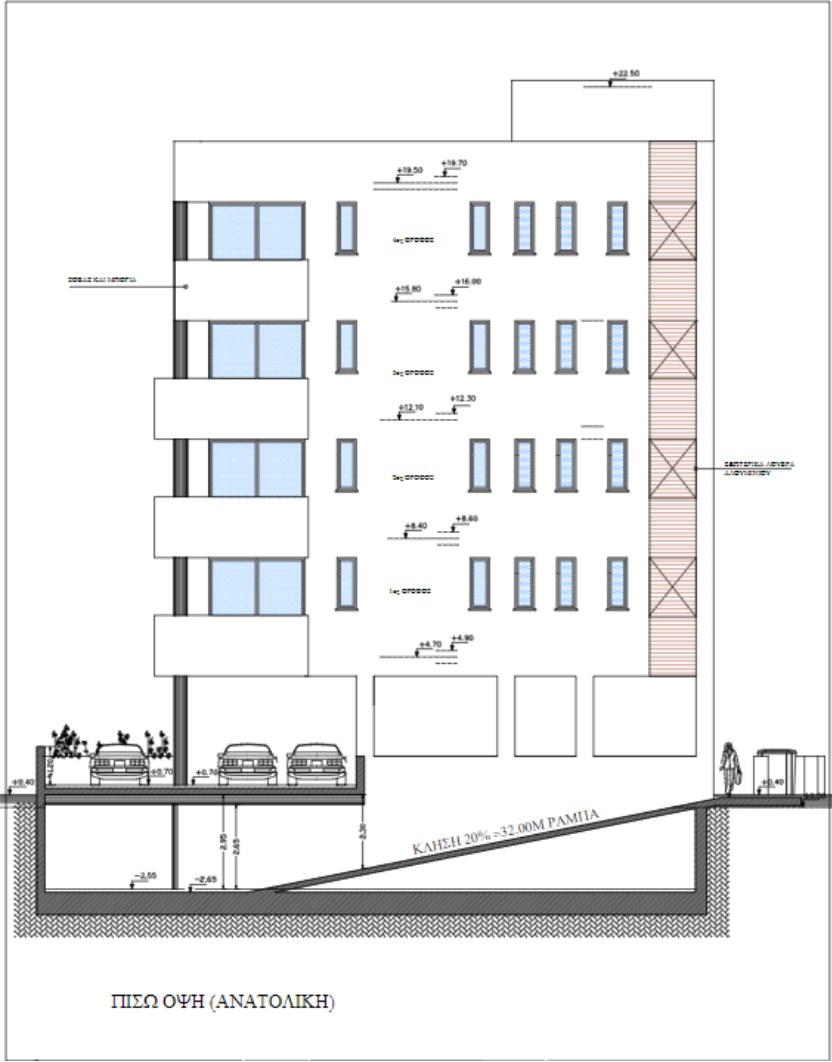
AD# : 17619

Basement Floor Plans



Side View -East

CH137 ΠΙΣΩ ΟΨΗ.pdf

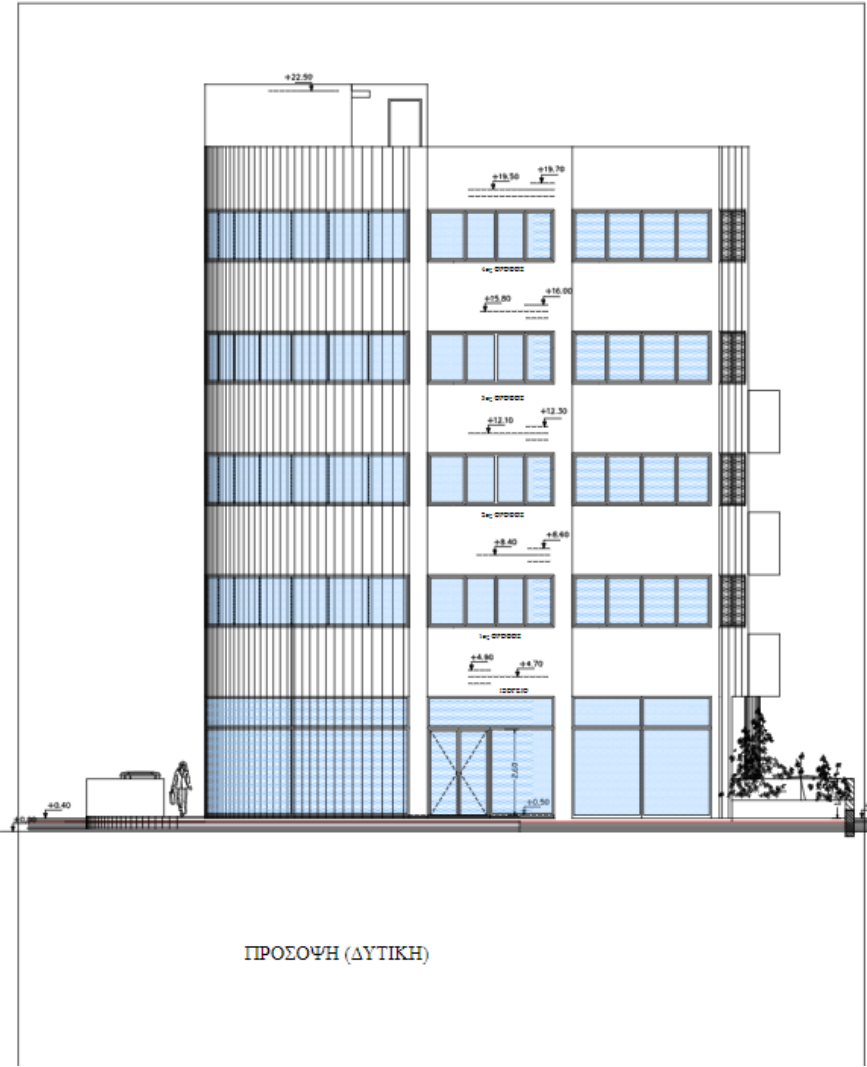


Side View-North



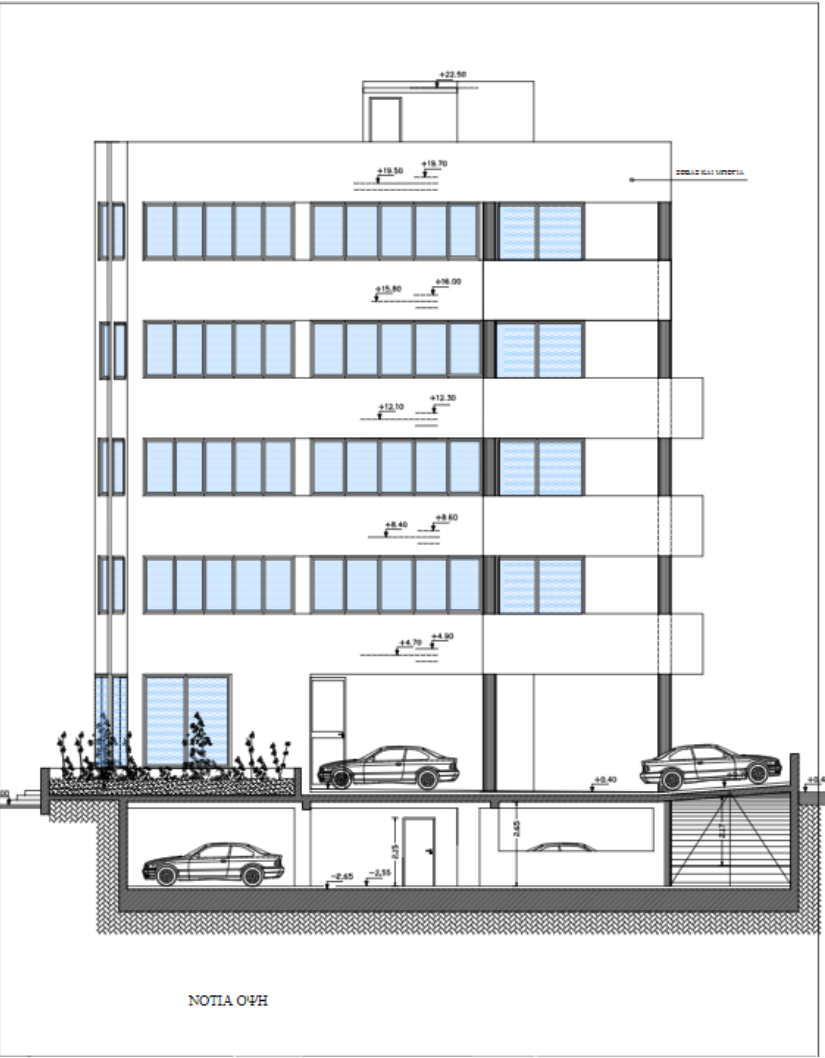
Side View-west

CH137 ΠΡΟΣΟΨΗ.pdf



Side view-south

CH137 ΠΛΑΓΙΑ ΟΨΗ 2.pdf



GROUND FLOOR

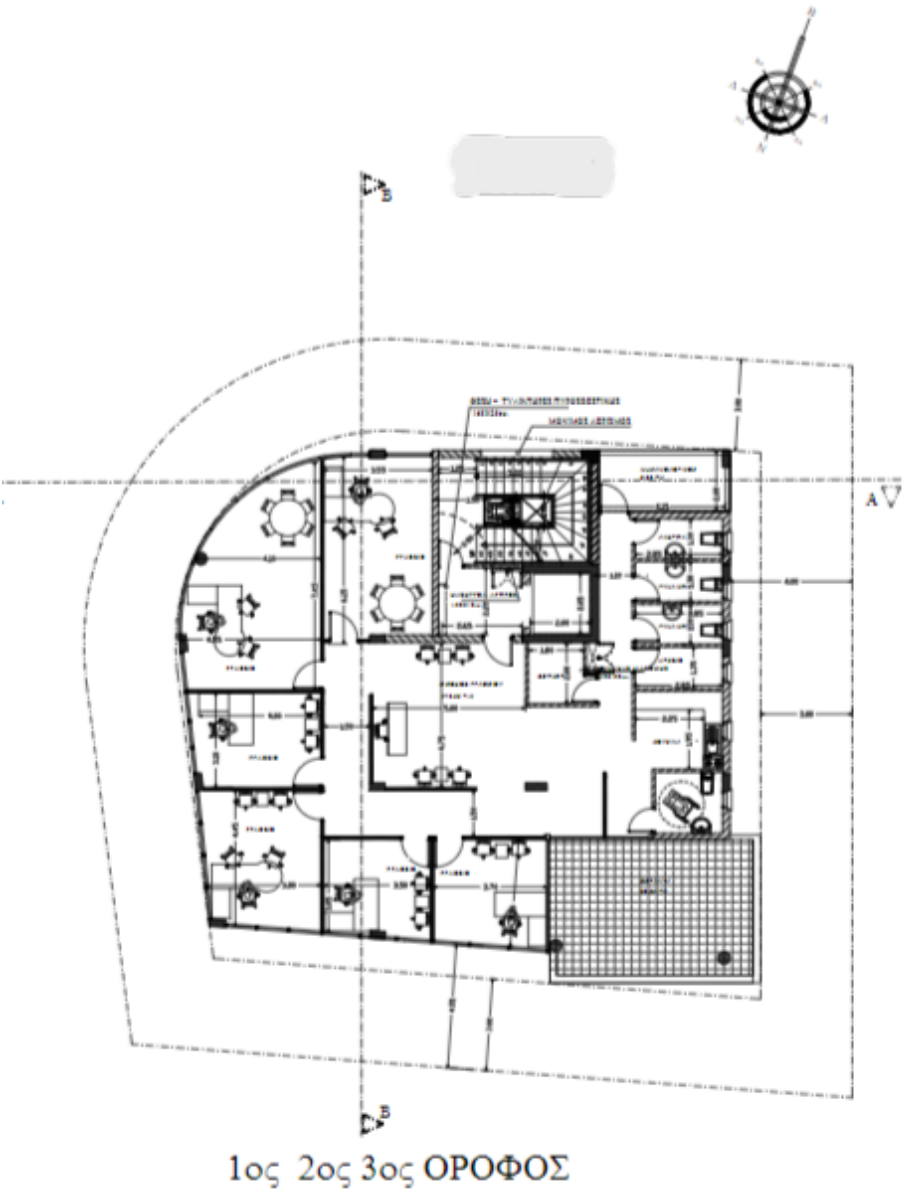


TYPICAL FLOOR(1-4)



Architectural floor plan of the Katochizoteyon building. The plan shows a semi-circular building with a central staircase and several rooms. A large room on the left is labeled 'KATACHIZOTIOTI'. There are several parking spaces with cars parked, labeled with numbers 1 through 10. A small garden area is located at the bottom left. The plan includes dimensions, room numbers, and a north arrow in the top right corner. A section line 'A-A' is indicated across the middle of the plan.

Floor Plans 1-3



Fourth Floor Plans

