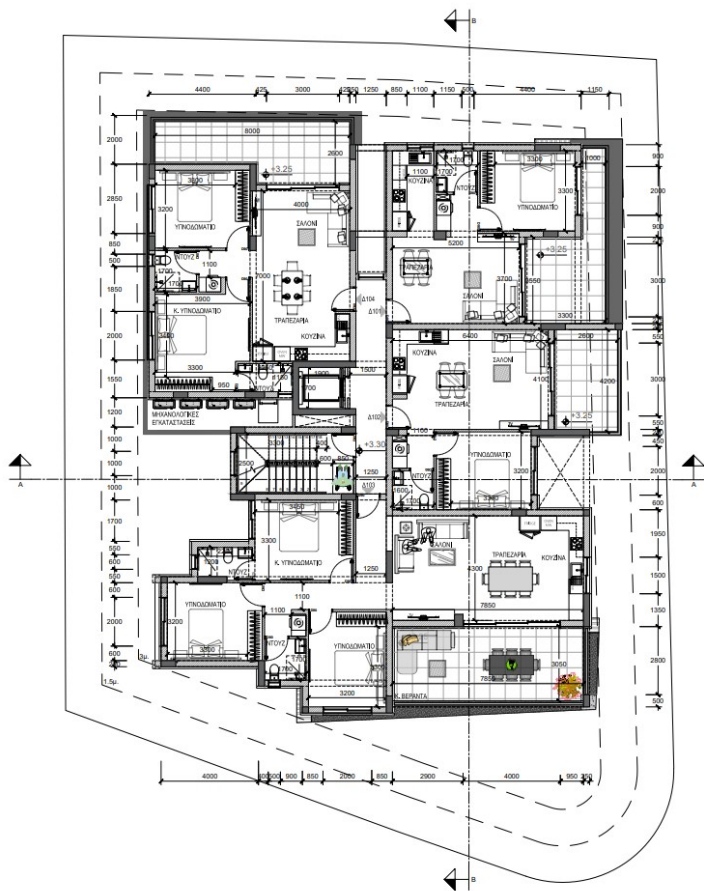


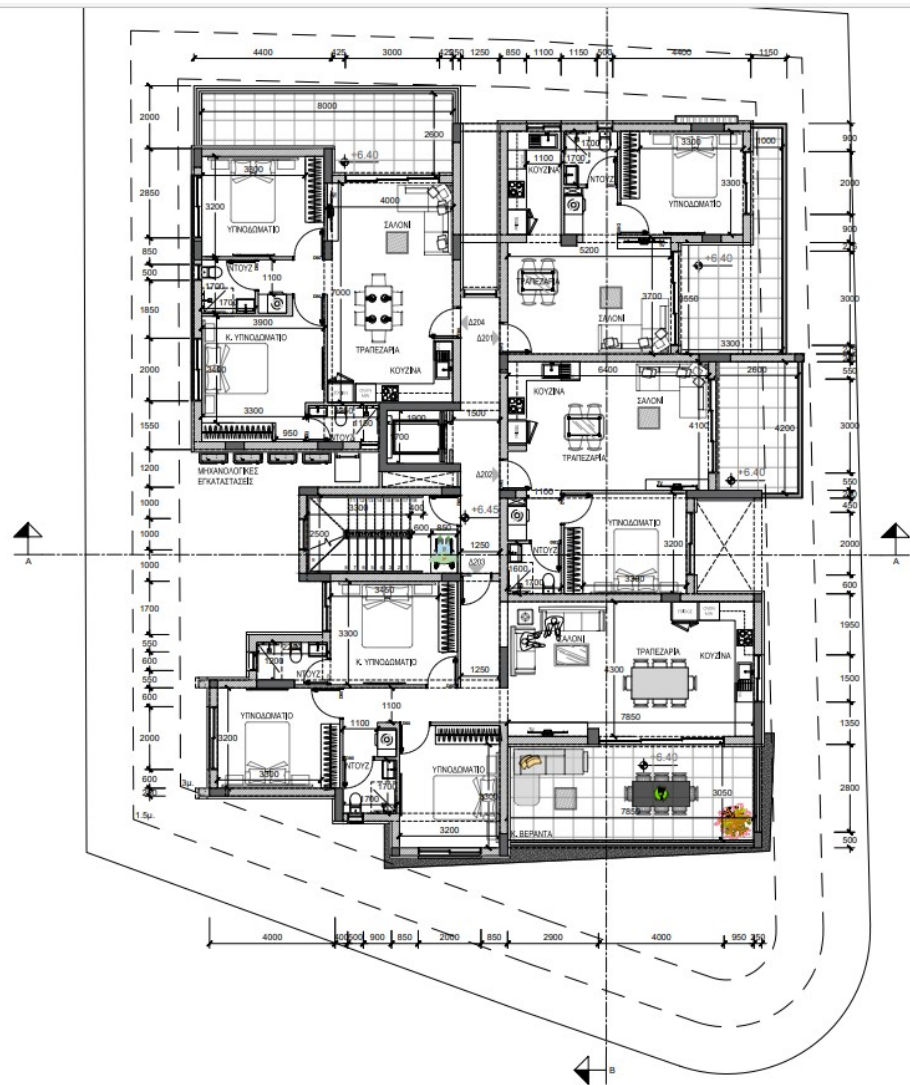
New project with apartments in a quiet area of the town

AD# : 17988

First Floor Plan

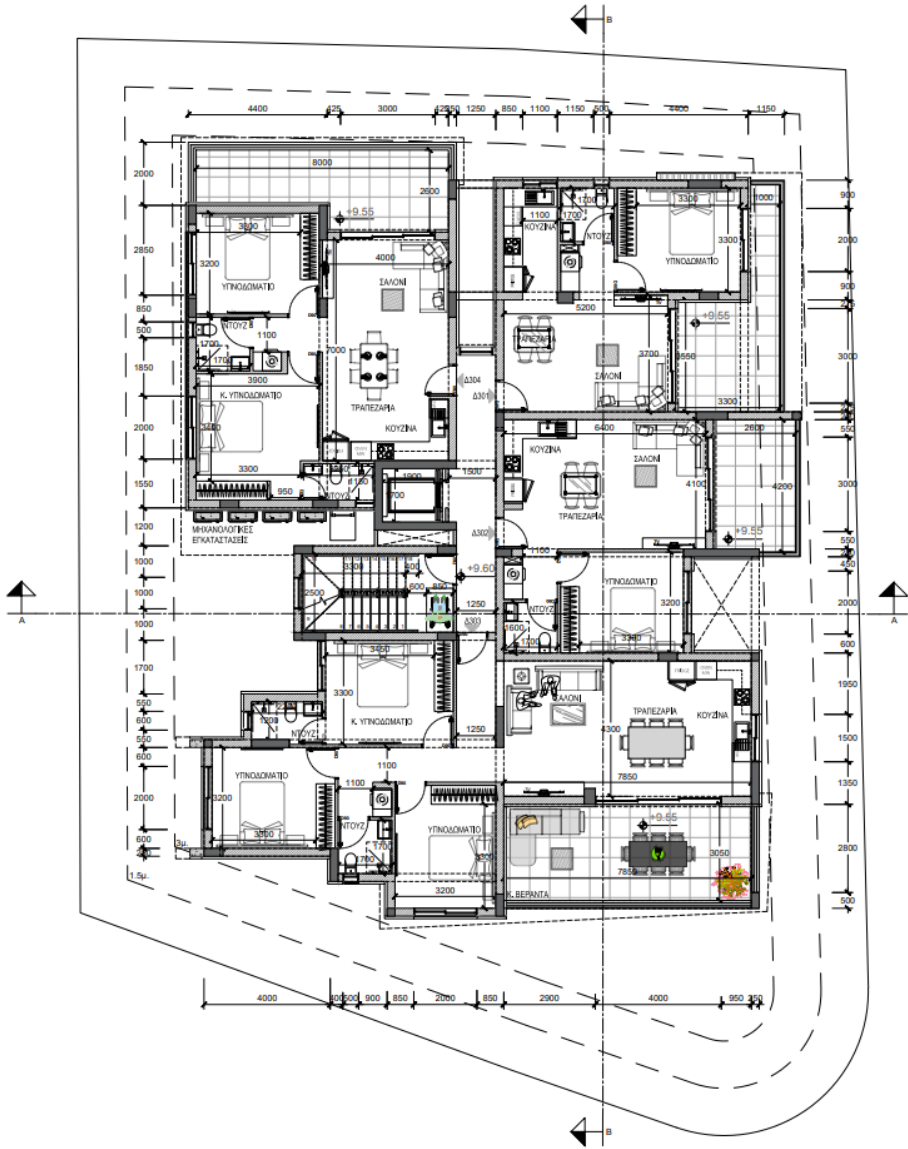


second Floor Plan



ΚΑΤΟΨΗ 2^{ου} ΟΡΟΦΟΥ

Third Floor Plan



This architectural floor plan depicts a multi-unit residential building. The layout is organized into several distinct units, each with its own set of rooms and dimensions. Key features include:

- Units and Rooms:**
 - Top Left Unit:** Includes a bedroom (ΥΠΝΟΔΟΜΑΤΙΟ) with dimensions 3200x3200, a living area (ΕΛΕΥΘΕΡΟ ΧΩΡΟ) of 4000, and a kitchen (ΚΟΥζίνα) of 3200.
 - Top Right Unit:** Features a bedroom (ΥΠΝΟΔΟΜΑΤΙΟ) of 3300x3300, a living area (ΕΛΕΥΘΕΡΟ ΧΩΡΟ) of 3700, and a kitchen (ΚΟΥζίνα) of 3200.
 - Middle Right Unit:** Includes a bedroom (ΥΠΝΟΔΟΜΑΤΙΟ) of 3200, a living area (ΕΛΕΥΘΕΡΟ ΧΩΡΟ) of 4100, and a kitchen (ΚΟΥζίνα) of 3200.
 - Bottom Left Unit:** Features a bedroom (ΥΠΝΟΔΟΜΑΤΙΟ) of 3300, a living area (ΕΛΕΥΘΕΡΟ ΧΩΡΟ) of 3400, and a kitchen (ΚΟΥζίνα) of 3200.
 - Bottom Right Unit:** Includes a bedroom (ΥΠΝΟΔΟΜΑΤΙΟ) of 3200, a living area (ΕΛΕΥΘΕΡΟ ΧΩΡΟ) of 3200, and a kitchen (ΚΟΥζίνα) of 3200.
- Common Areas:** A central staircase and a common living area (ΕΛΕΥΘΕΡΟ ΧΩΡΟ) are located in the middle of the plan.
- Dimensions:** The plan includes various dimensions for rooms and overall sections, such as 4400, 3000, 1250, 850, 1100, 1150, 2000, 2850, 850, 500, 1850, 2000, 1550, 1200, 1000, 1000, 1700, 1500, 900, 500, 600, 2000, 4000, 3000, 900, 850, 2000, 850, 2900, 4000, 850, 300.
- Orientation:** A north arrow is located in the top right corner of the plan.