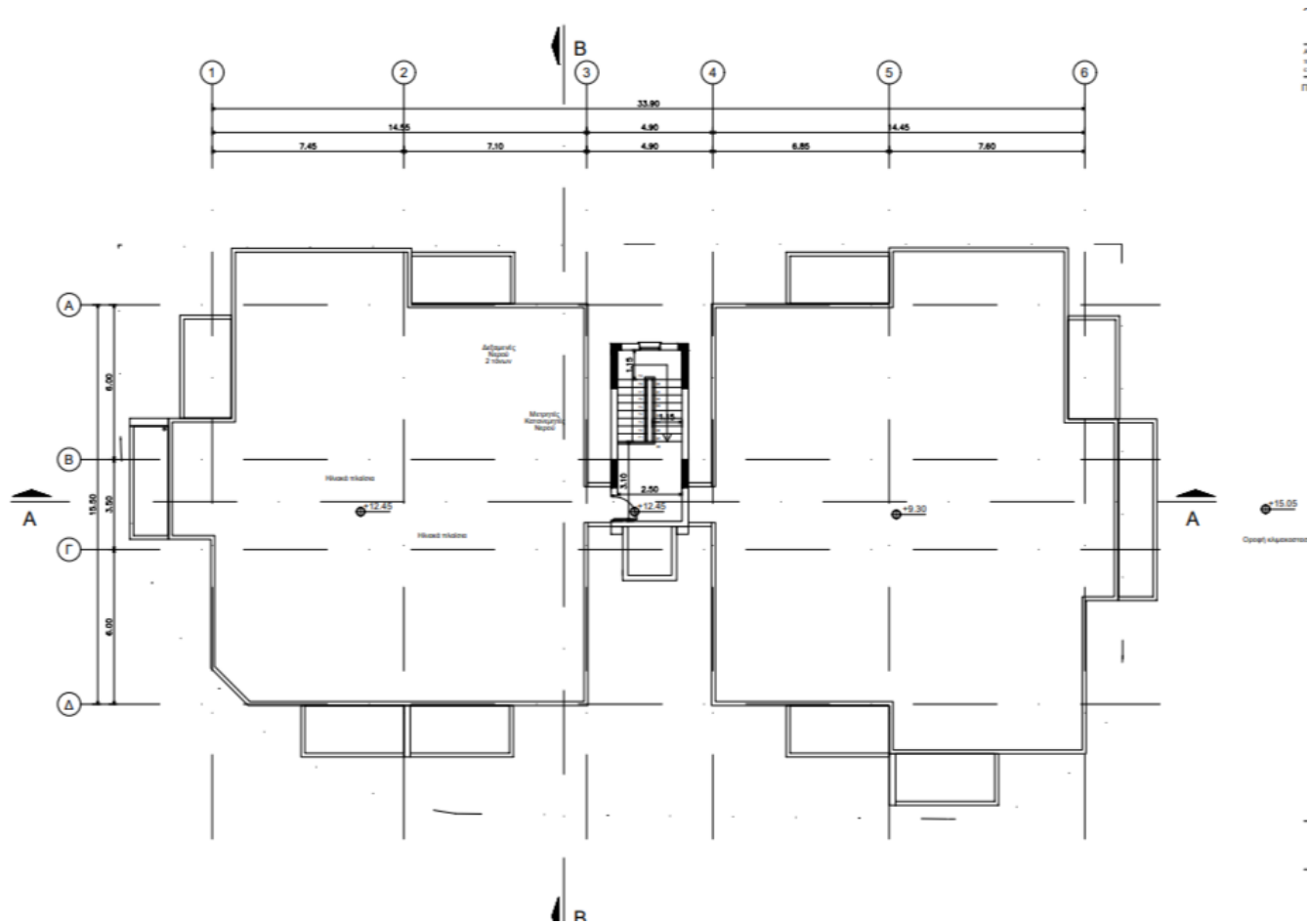


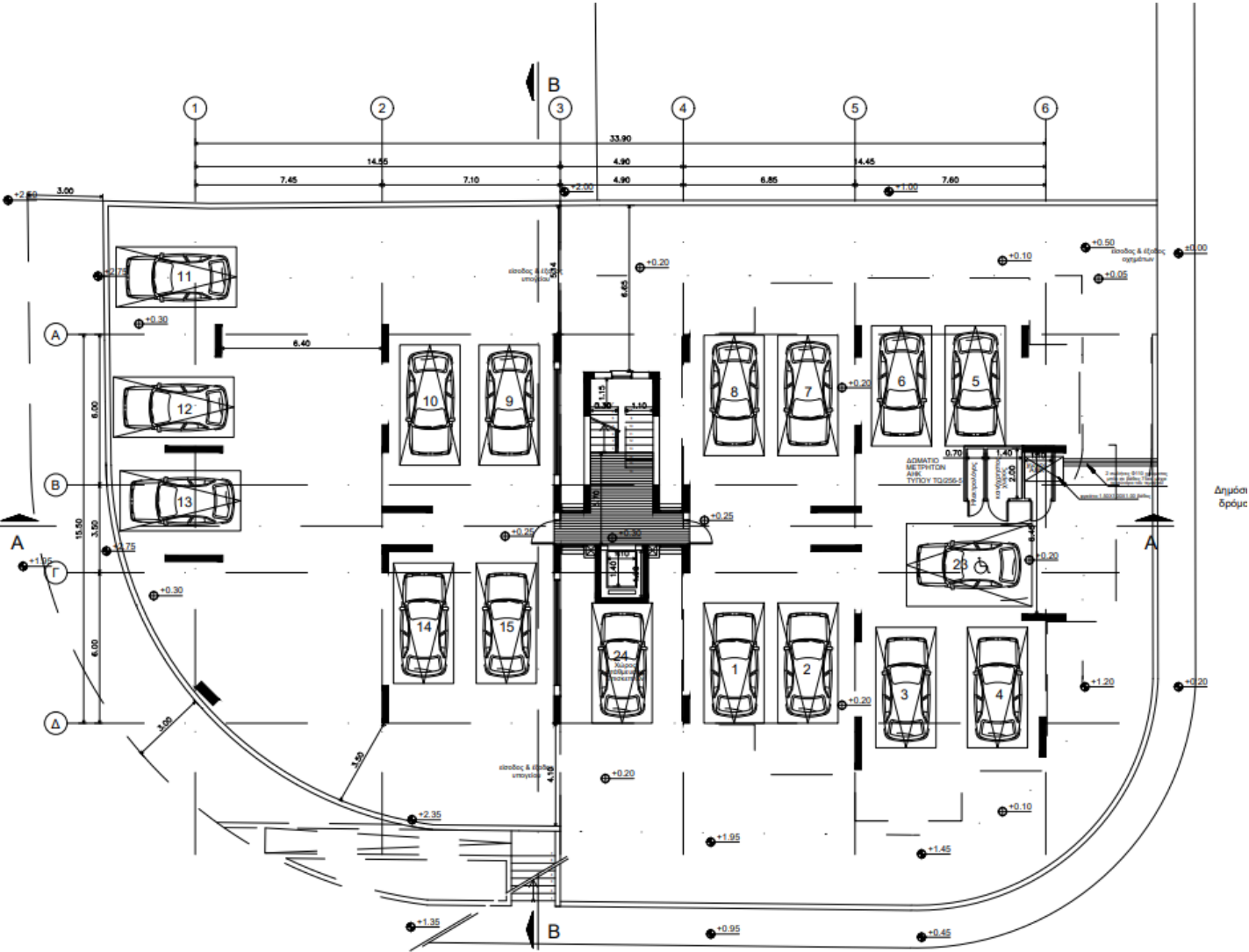
Modern Building with one bed apartments close to unic

AD# : 18172

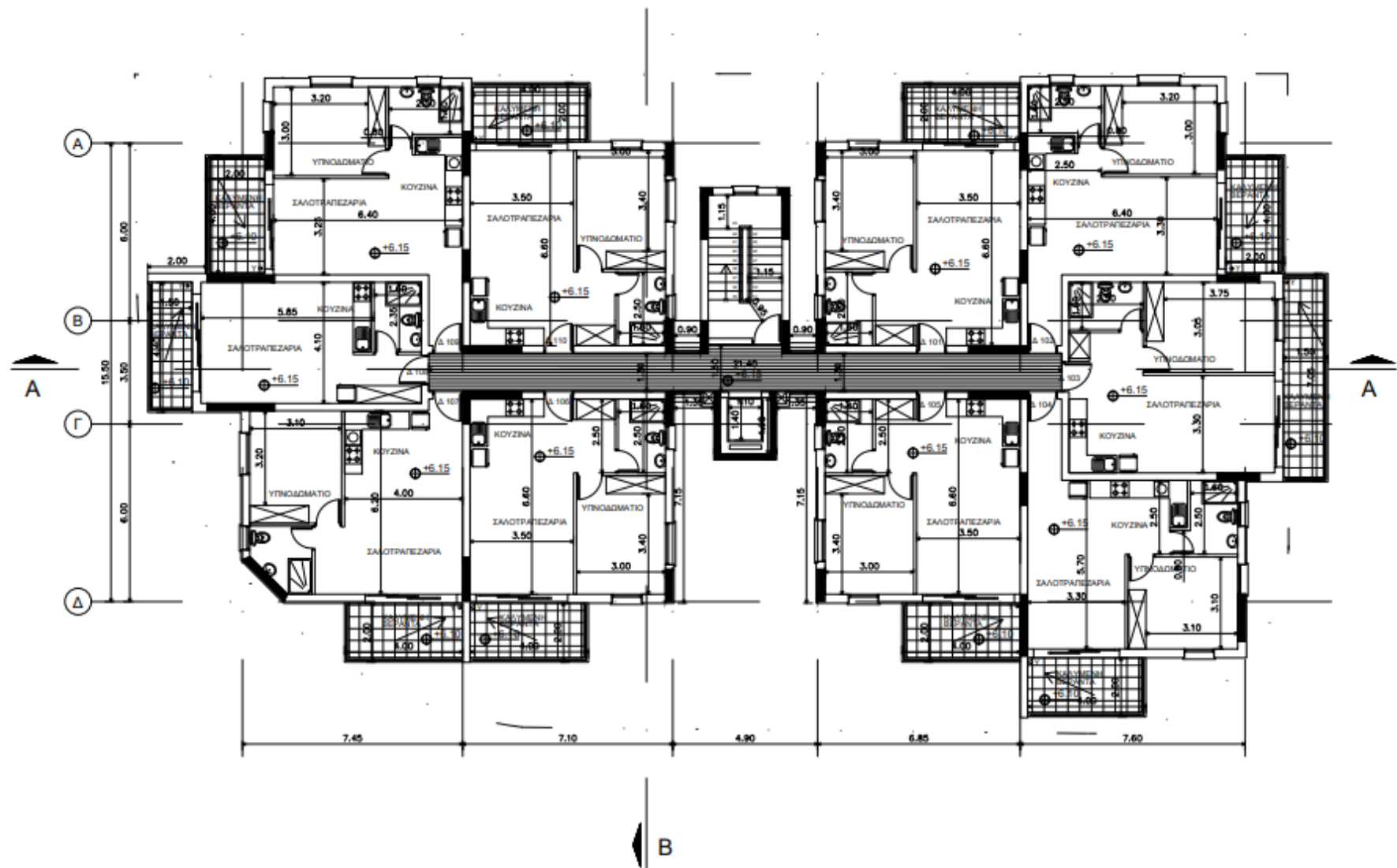
top floor plan



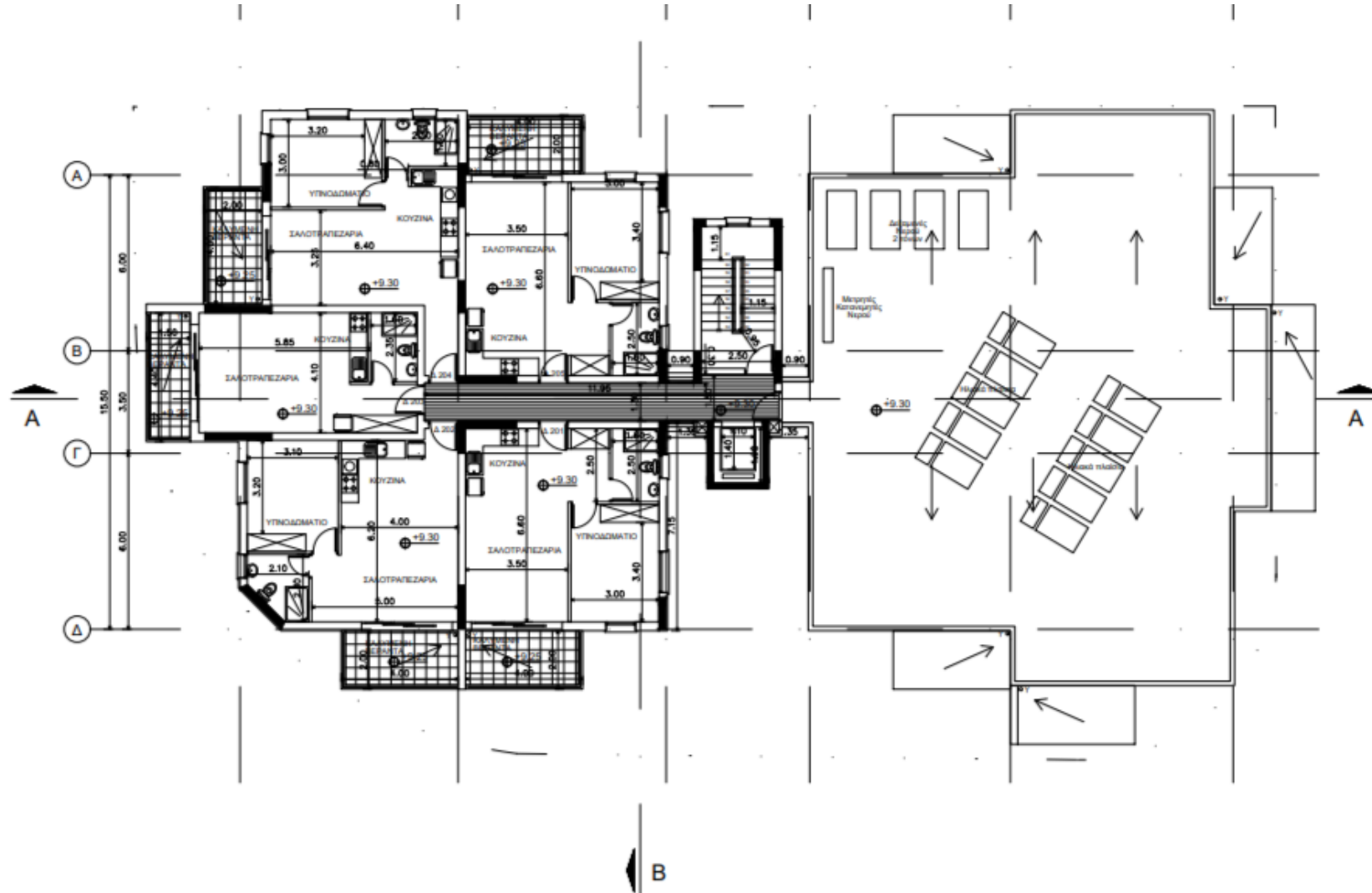
basement floor plan



first floor



ΚΑΤΟΨΗ 2ου ΟΡΟΦΟΥ



Architectural floor plan of the ground floor (KATOFH IΣΘΓΕΙΟΥ) of a building. The plan shows a semi-circular parking area on the left with 10 car spaces (16-22) and a central entrance area. To the right is a large residential complex with multiple units, each containing a kitchen (KOYZINA), living area (ZANOTPAITEZAPIA), and bathroom (YTINOΔOMATIO). The plan includes detailed dimensions, elevations, and a grid system (1-6 horizontally, A-D vertically).

ΚΑΤΟΨΗ ΙΣΟΓΕΙΟΥ