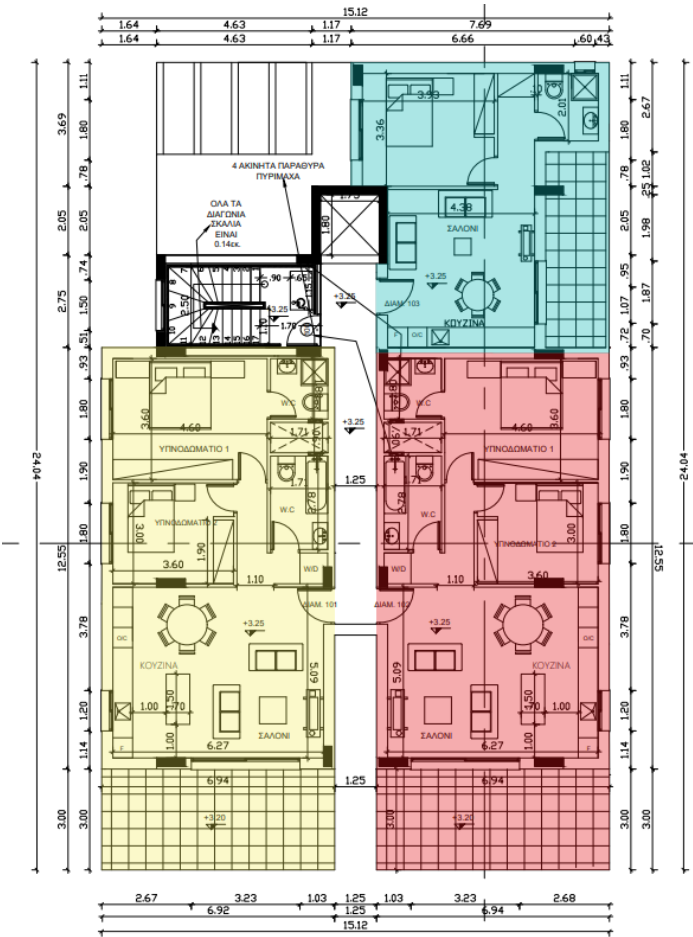


Luxurious new project, modern one and two beds apartments

AD# : 18313

First Floor Plan

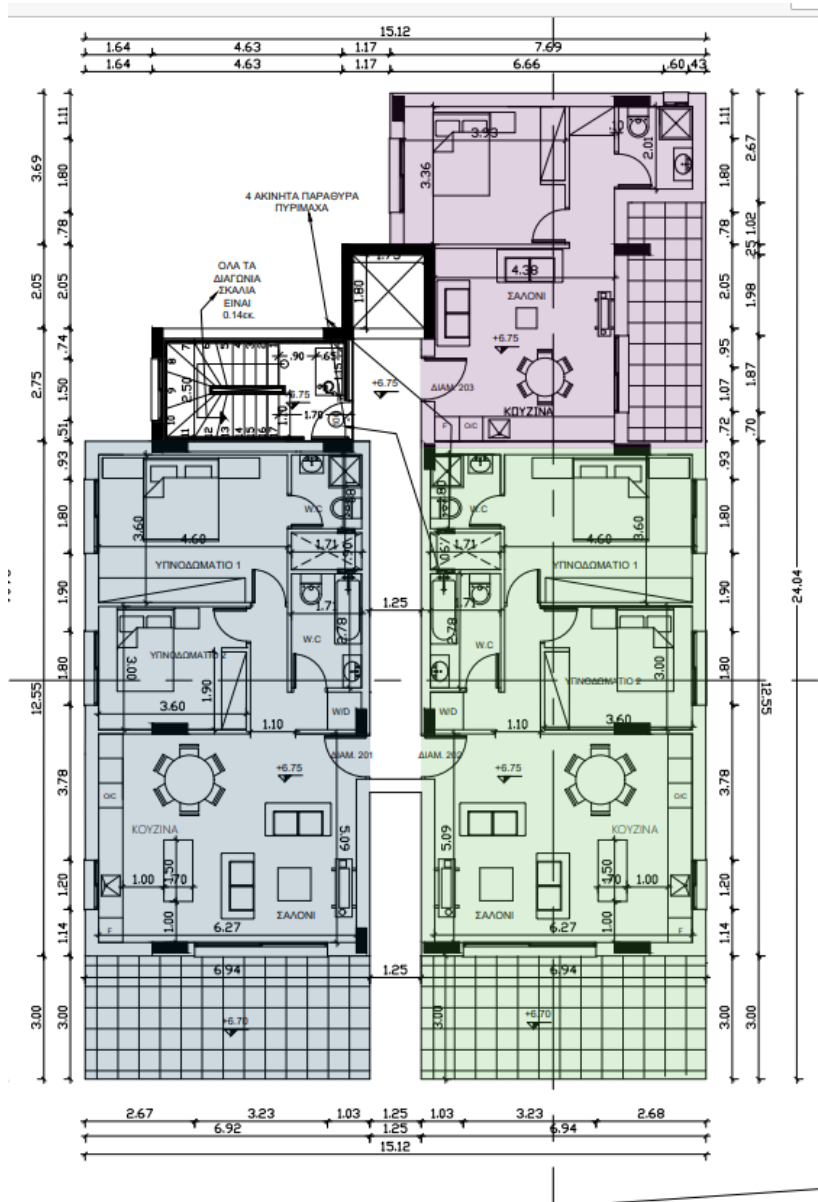


The floor plan shows a large apartment with the following features and dimensions:

- Entrance:** 1.80m wide, leading to a small hallway (1.75m x 2.49m) with a coat closet (ΑΝΤΡΟΔΕΣΜΟΤΑ).
- Bedrooms (ΥΠΝΟΔΟΜΑΤΙΟ):**
 - Bedroom 1: 3.72m x 3.40m, includes a wardrobe (ΑΝΤΡΟΔΕΣΜΟΤΑ).
 - Bedroom 2: 3.73m x 3.20m.
 - Bedroom 3: 3.40m x 3.43m, includes a wardrobe (ΑΝΤΡΟΔΕΣΜΟΤΑ).
 - Bedroom 4: 5.27m x 3.08m, includes a wardrobe (ΑΝΤΡΟΔΕΣΜΟΤΑ).
- Bathrooms:**
 - W.C. (Toilet): 1.75m x 3.43m.
 - Bath (Λουτρό): 2.00m x 2.00m.
 - W.D. (Washing Machine): 1.60m x 1.15m.
- Living and Dining Area:**
 - Living Room: 5.60m x 4.09m, includes a sofa and TV.
 - Dining Room: 6.30m x 11.89m, features a round table labeled "ΤΡΑΠΕΖΑΡΙΑ" and chairs.
 - Kitchen: 2.50m x 2.50m, includes a sink (ΠΥΛΗ) and stove.
- Other Features:**
 - Staircase: Located at the entrance, with a note "ΟΛΑ ΤΑ ΔΙΑΦΟΝΙΑ ΣΚΑΛΙΑ ΕΙΝΑΙ 0.14cc." (All stair landings are 0.14cc).
 - Storage: Multiple wardrobes (ΑΝΤΡΟΔΕΣΜΟΤΑ) and a closet (ΑΝΤΡΟΔΕΣΜΟΤΑ) in the entrance hallway.
 - Dimensions: Total area 120m², overall width 5.60m, and a large grid area of 13.12m x 3.00m at the bottom.

MH

—



Third Floor Plan

