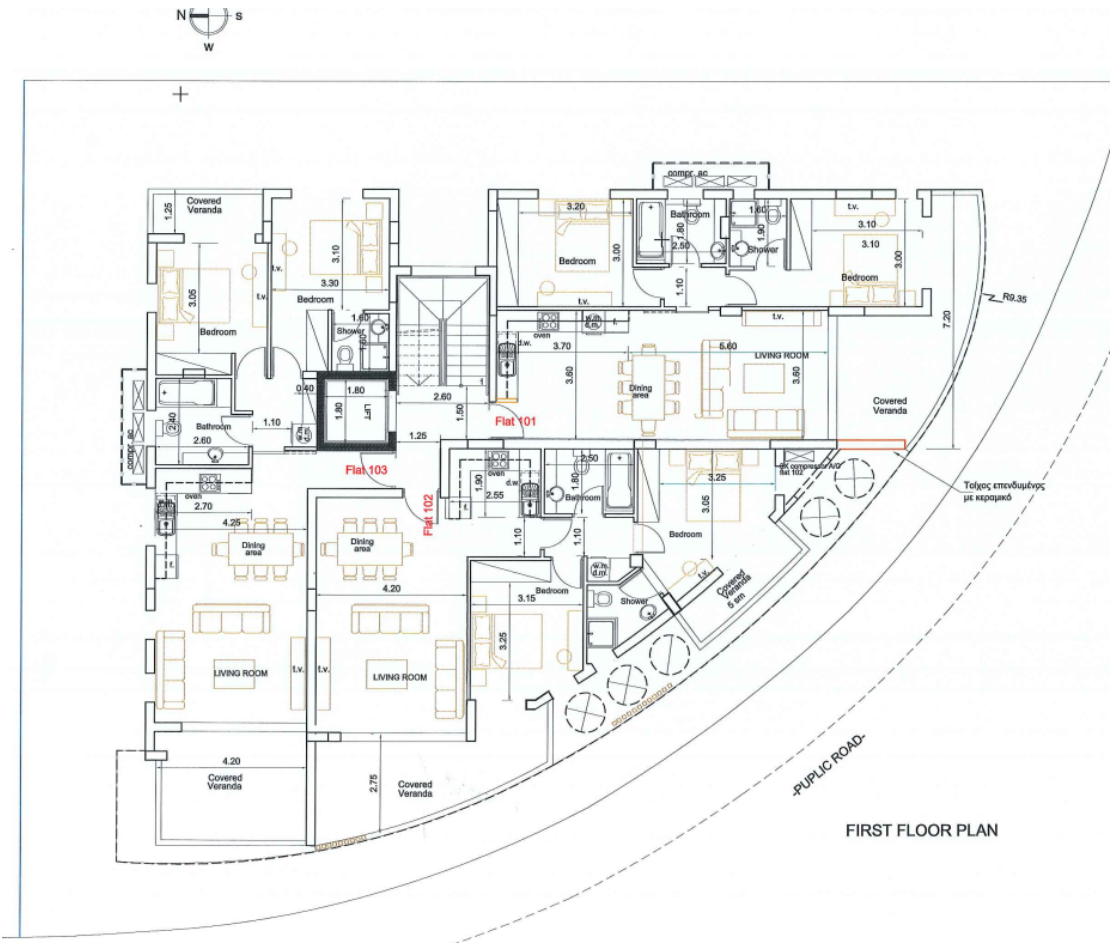


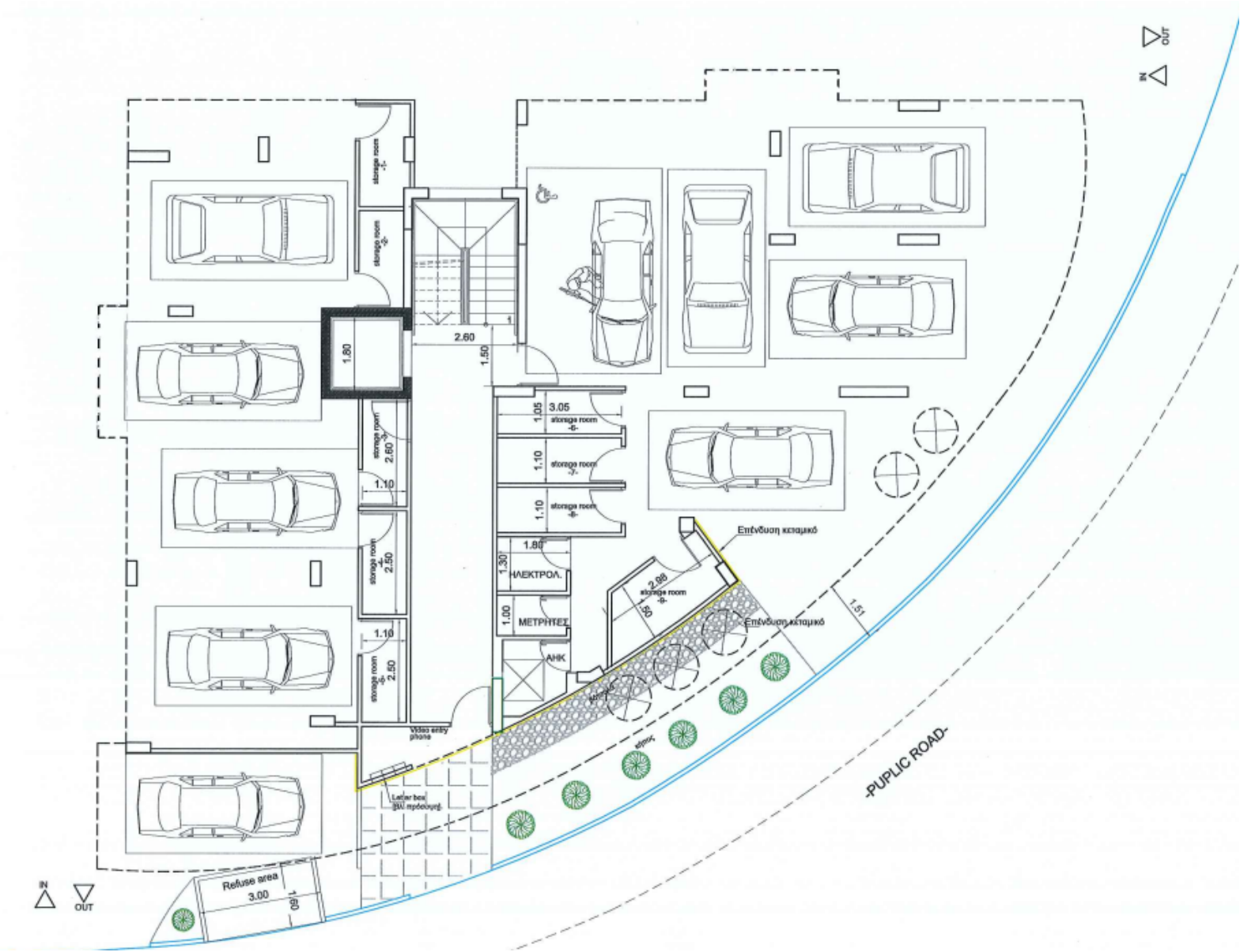
Luxurious apartments by the sea, great investment with high ROI

AD# : 18483

FIRST-FLOOR



PARKING



Architectural floor plan of the second floor of a building, showing three flats (Flat 201, Flat 202, Flat 203) and common areas. The plan includes rooms such as Living Room, Dining area, Kitchen, Bedrooms, Bathrooms, and Showers. Dimensions are provided for various rooms and areas. The building has a curved exterior wall on the right side. A note on the right indicates "Τόχος επένδυσε με κεραμικό" (Arch with ceramic cladding).

Flat 201: Includes a Living Room (3.60 x 3.60), Dining area (3.70 x 3.60), Kitchen (3.00 x 3.20), two Bedrooms (3.10 x 3.10 and 3.10 x 3.00), a Bathroom (2.50 x 1.80), and a Shower (1.80 x 1.80). It also features a balcony (3.55 x 7.20) and a storage area (1.10 x 1.10).

Flat 202: Includes a Living Room (4.70 x 6.50), Dining area (4.20 x 4.20), Kitchen (3.15 x 3.35), a Bedroom (3.15 x 3.15), a Bathroom (1.80 x 1.80), and a Shower (1.80 x 1.80). It also features a balcony (3.05 x 3.25) and a storage area (1.10 x 1.10).

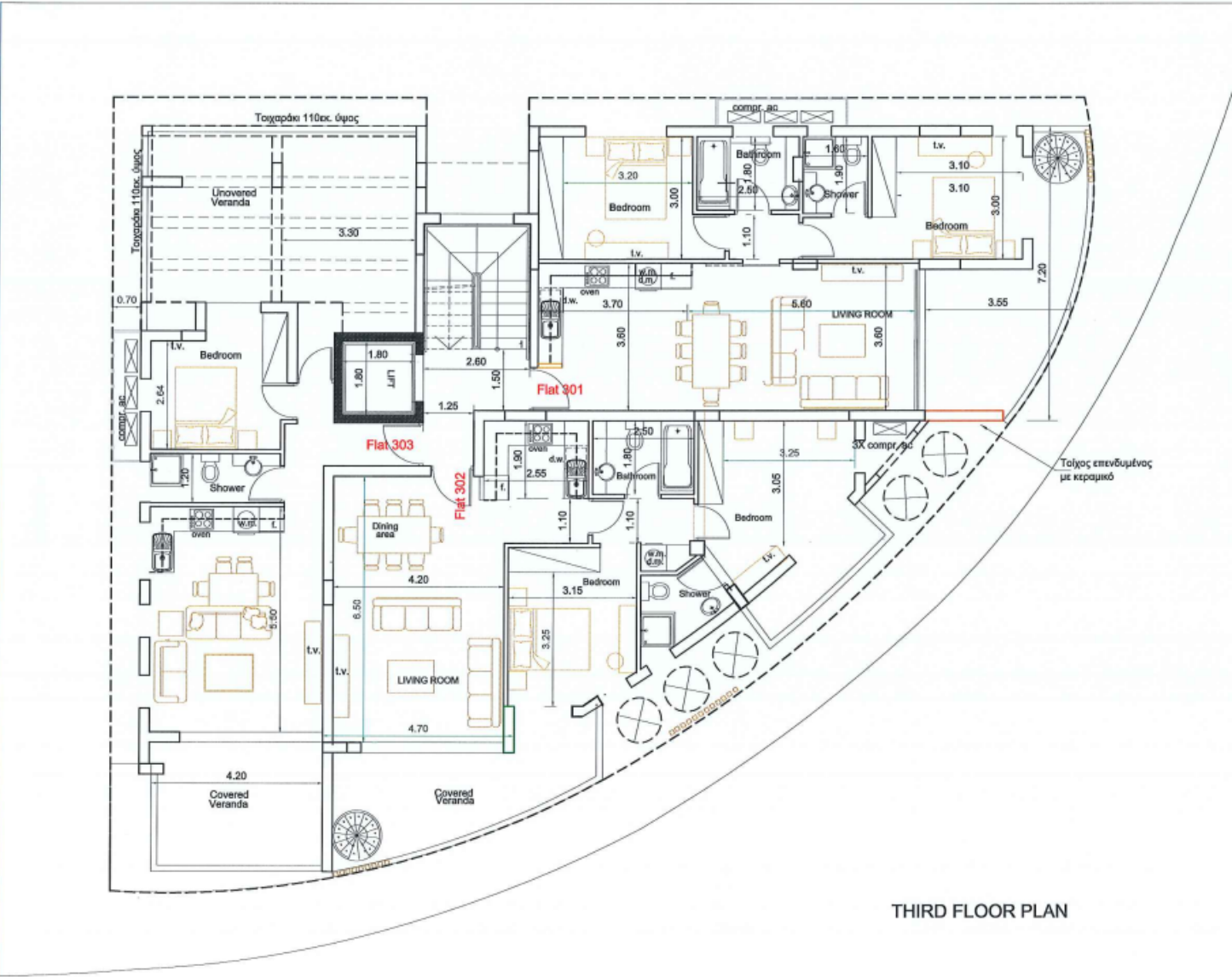
Flat 203: Includes a Living Room (4.20 x 4.20), Dining area (4.20 x 4.20), Kitchen (3.00 x 3.00), a Bedroom (2.60 x 2.60), a Bathroom (1.80 x 1.80), and a Shower (1.80 x 1.80). It also features a balcony (3.30 x 3.30) and a storage area (1.10 x 1.10).

Common Areas: Includes a Covered Veranda (4.20 x 4.20), an Uncovered Veranda (3.30 x 3.30), and a central staircase area (2.60 x 1.50).

SECOND FLOOR PLAN

THIRD-FLOOR

vr



THIRD FLOOR PLAN

ROOF GARDEN

