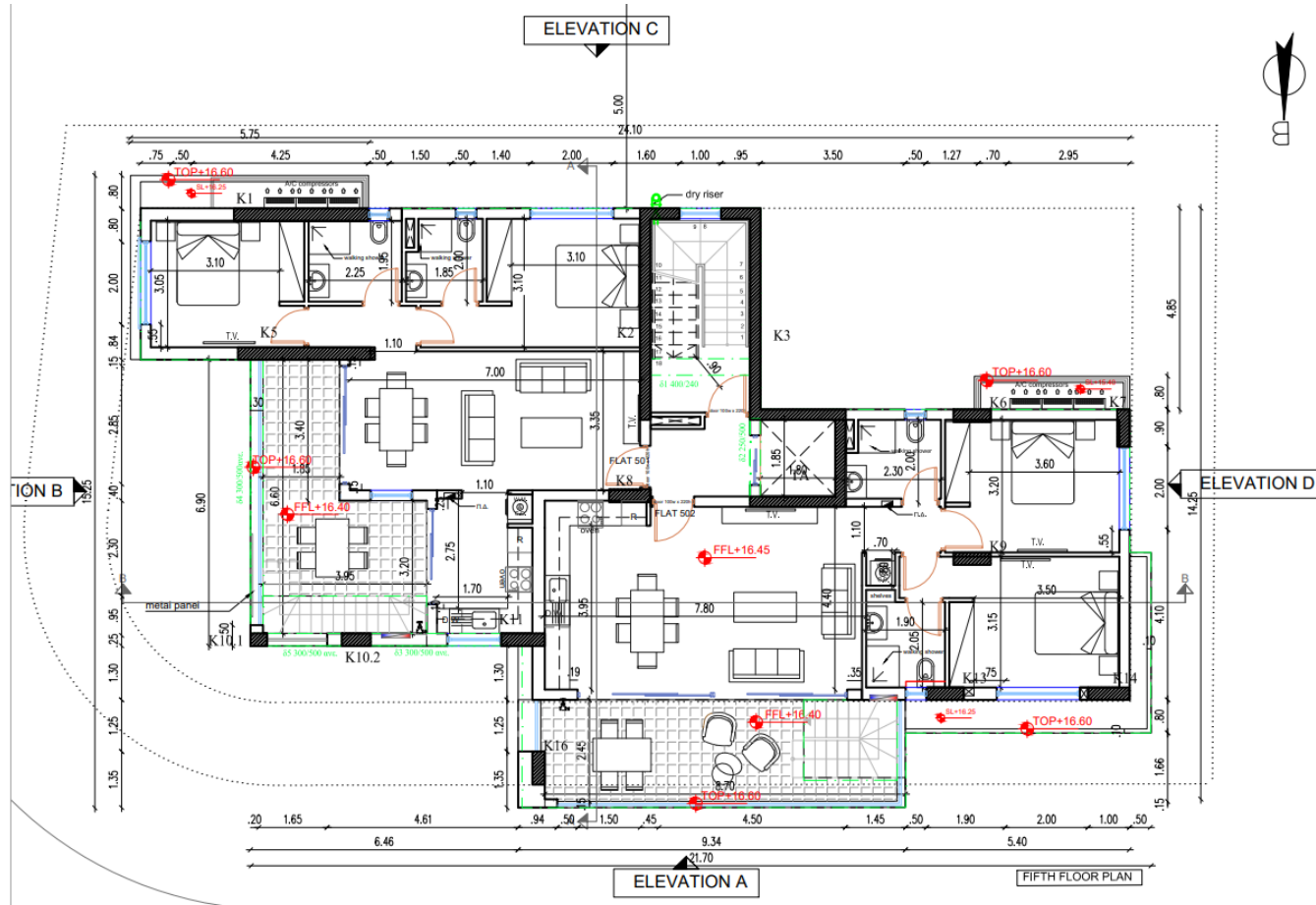
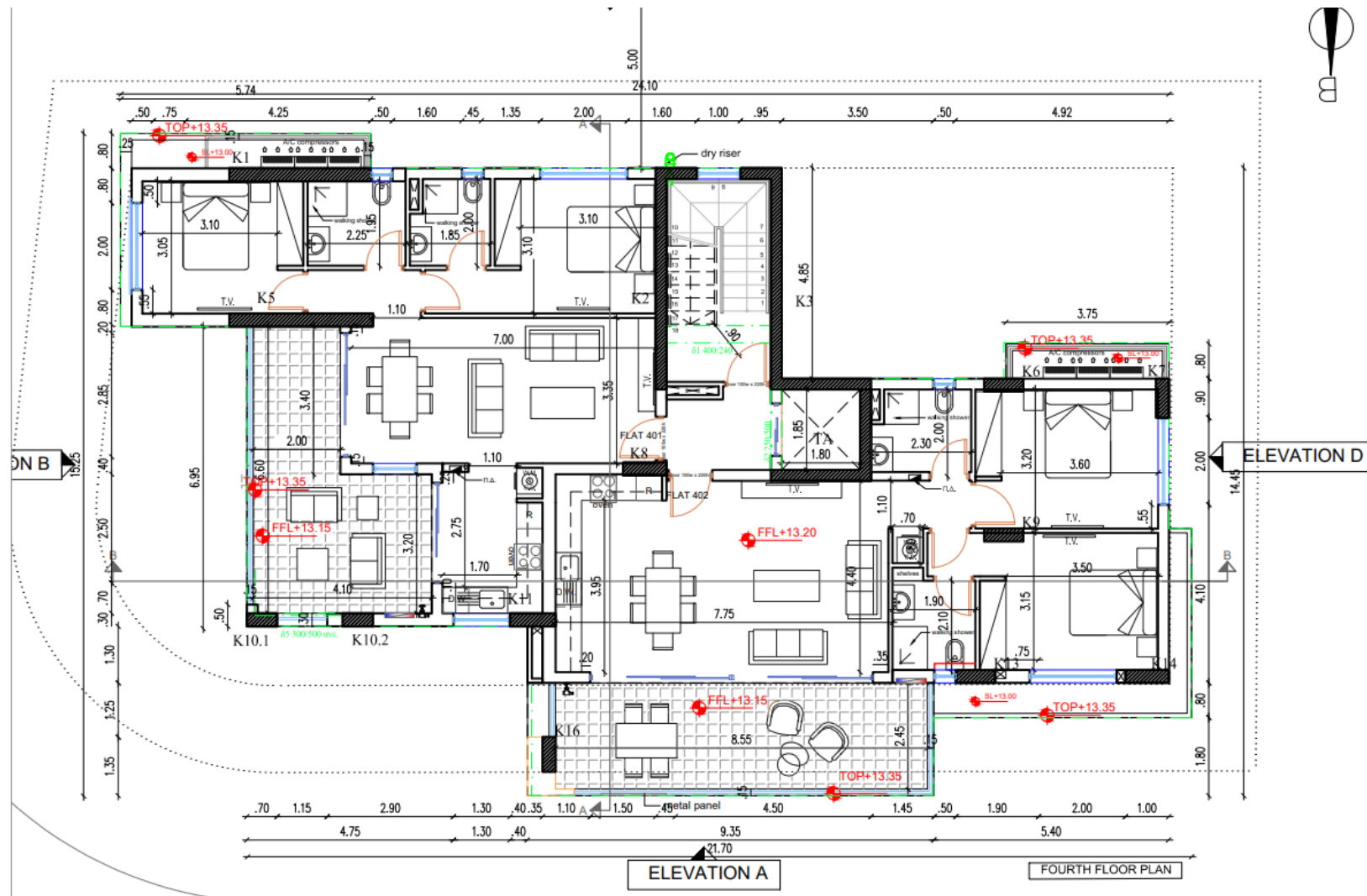


**AD# : 18492**

### fifth floor plan

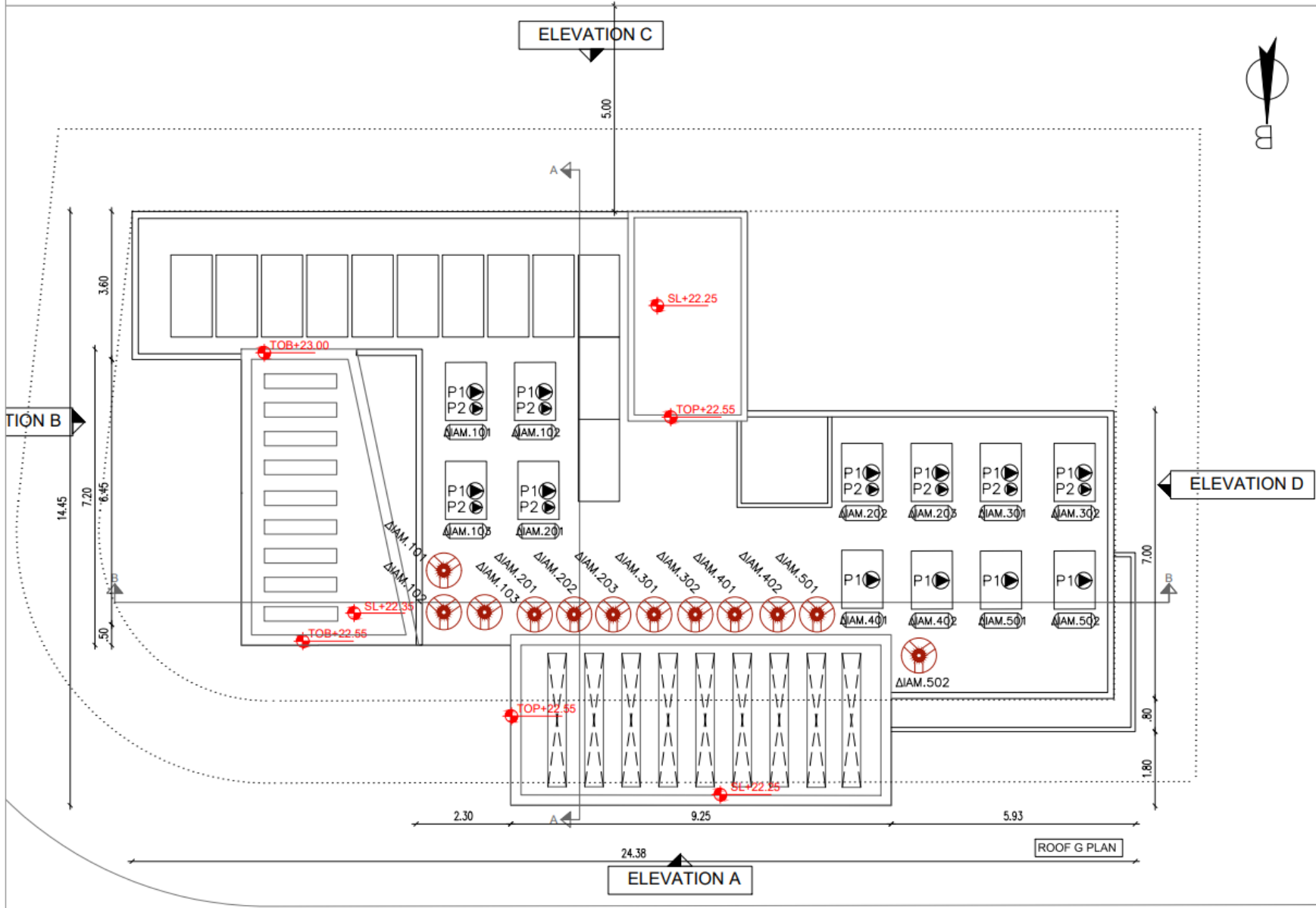


ON B



[illegible]

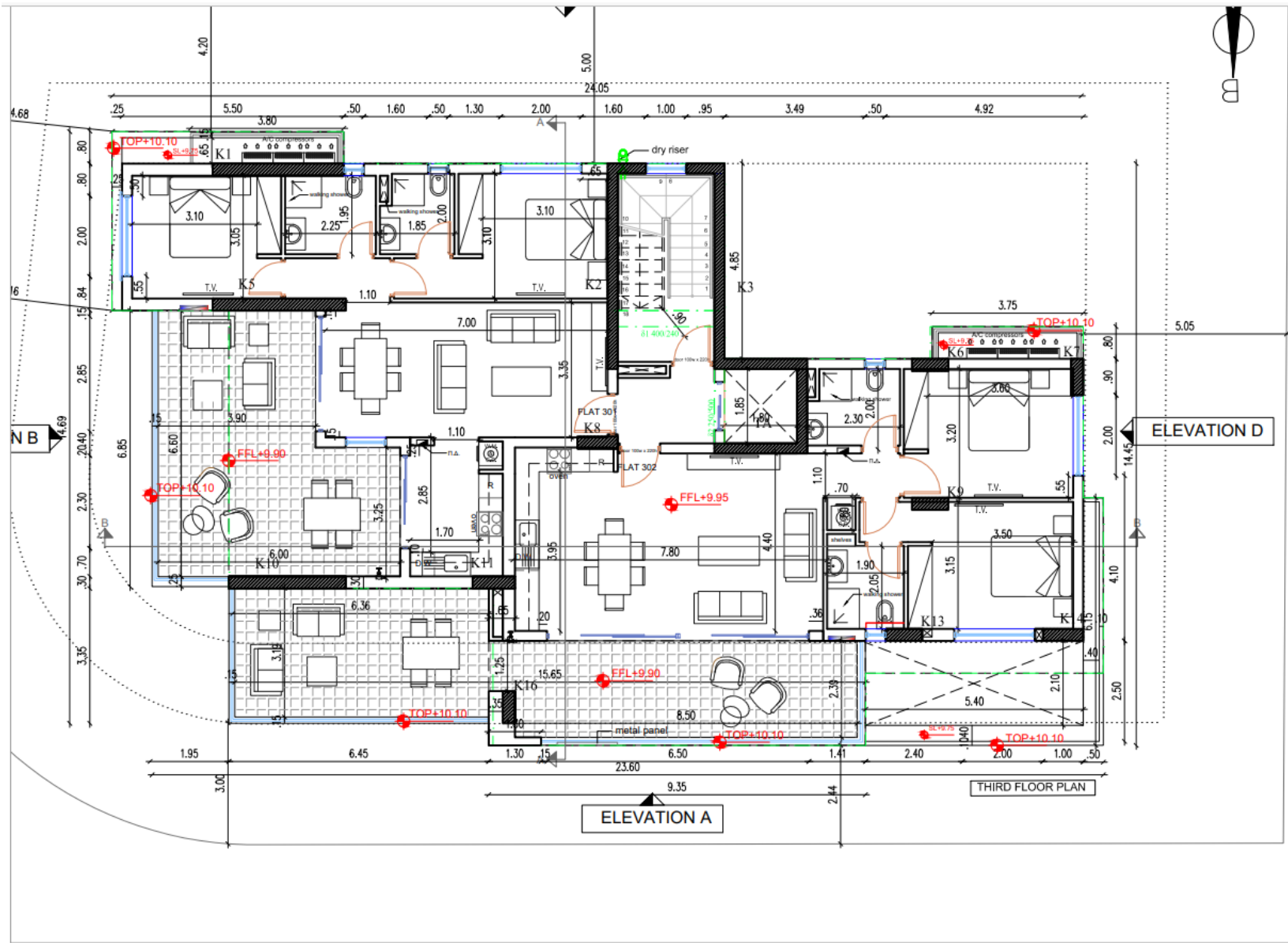
roof plan



The image is a detailed architectural floor plan of the second floor. It features several rooms and areas with specific dimensions and annotations. Key elements include:

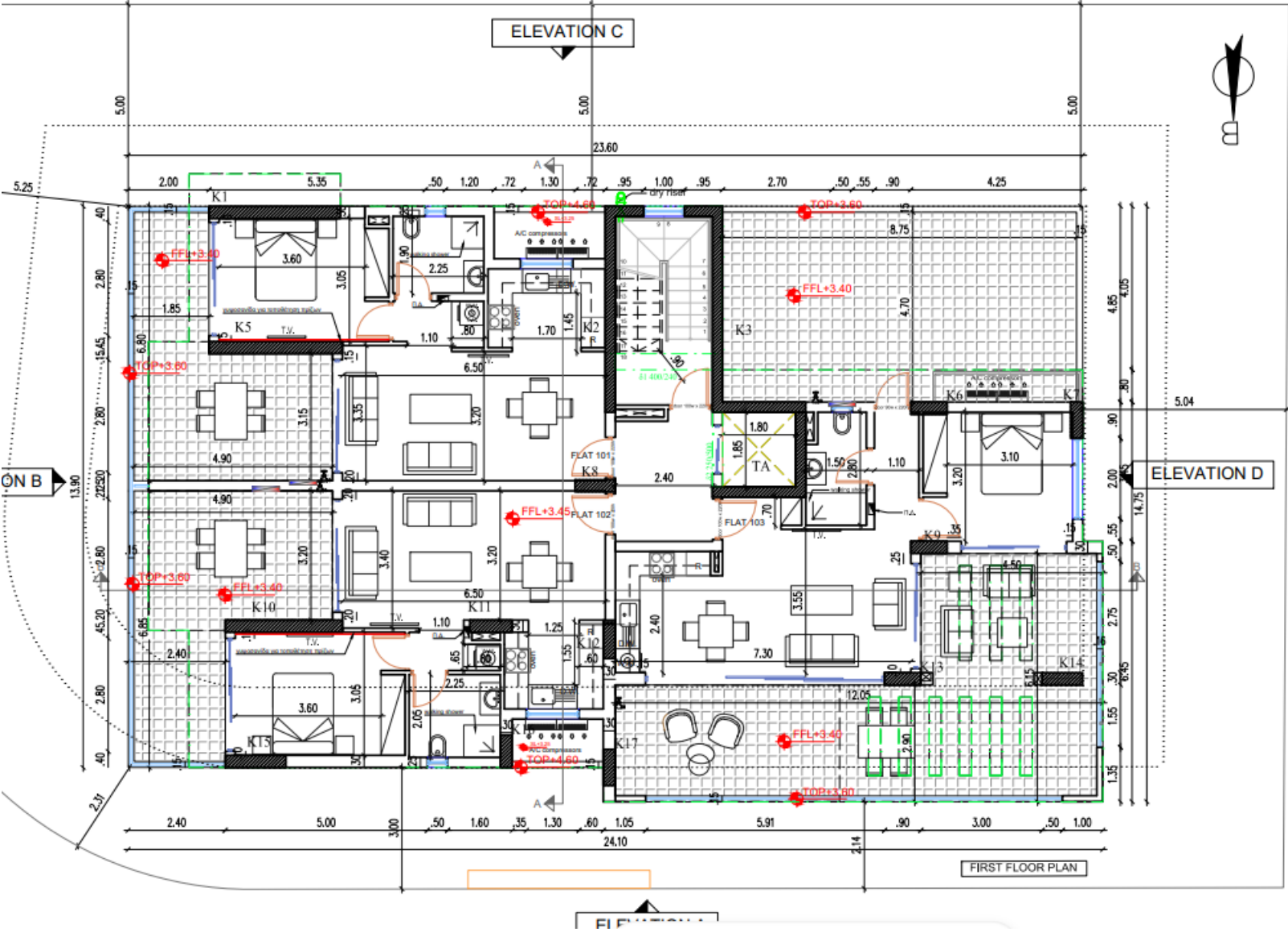
- Rooms and Areas:** FLAT 201, FLAT 202, FLAT 203, TA (Common Area), and various utility spaces like T.V. (Television), K (Kitchen), and B (Bathroom).
- Dimensions:** Numerous numerical values are scattered throughout the plan, indicating room sizes and overall building dimensions. For example, overall dimensions include 13.90, 20.20, 46.20, 2.80, 4.00, 5.00, 22.60, 4.20, 2.15, 2.26, 4.00, 50, 2.90, 2.45, 3.00, 3.05, 2.00, 14.75, 5.04, 4.85, 4.05, 4.90, 50, 3.50, 1.00, 0.95, 1.00, 0.95, 0.72, 1.30, 0.72, 1.20, 0.50, 1.00, 0.50, 1.35, 3.60, 3.05, 2.25, 1.90, 1.10, 0.80, 1.70, 1.45, 6.50, 3.20, 3.35, 3.15, 4.40, 3.20, 4.40, 3.20, 6.50, 1.10, 1.25, 1.60, 2.40, 7.30, 1.40, 2.75, 5.40, 4.20, 2.26, 4.00, 50, 2.90, 2.45, 3.00, 3.05, 2.00, 14.75, 5.04, 4.85, 4.05, 4.90, 50, 3.50, 1.00, 0.95, 1.00, 0.95, 0.72, 1.30, 0.72, 1.20, 0.50, 1.00, 0.50, 1.35, 3.60, 3.05, 2.25, 1.90, 1.10, 0.80, 1.70, 1.45, 6.50, 3.20, 3.35, 3.15, 4.40, 3.20, 4.40, 3.20, 6.50, 1.10, 1.25, 1.60, 2.40, 7.30, 1.40, 2.75, 5.40, 4.20, 2.26, 4.00, 50, 2.90, 2.45, 3.00, 3.05, 2.00, 14.75, 5.04, 4.85, 4.05, 4.90.
- Elevation Markers:** A, B, C, and D are placed around the perimeter of the plan.
- North Arrow:** Located in the top right corner, pointing towards the top of the page.
- Annotations:** Various text labels and symbols are used to identify specific features, such as "FLAT 201", "FLAT 202", "FLAT 203", "TA", "T.V.", "K", "B", "K5", "K6", "K7", "K8", "K9", "K10", "K11", "K12", "K13", "K14", "K15", "K16", "K17", "K18", "K19", "K20", "K21", "K22", "K23", "K24", "K25", "K26", "K27", "K28", "K29", "K30", "K31", "K32", "K33", "K34", "K35", "K36", "K37", "K38", "K39", "K40", "K41", "K42", "K43", "K44", "K45", "K46", "K47", "K48", "K49", "K50", "K51", "K52", "K53", "K54", "K55", "K56", "K57", "K58", "K59", "K60", "K61", "K62", "K63", "K64", "K65", "K66", "K67", "K68", "K69", "K70", "K71", "K72", "K73", "K74", "K75", "K76", "K77", "K78", "K79", "K80", "K81", "K82", "K83", "K84", "K85", "K86", "K87", "K88", "K89", "K90", "K91", "K92", "K93", "K94", "K95", "K96", "K97", "K98", "K99", "K100", "K101", "K102", "K103", "K104", "K105", "K106", "K107", "K108", "K109", "K110", "K111", "K112", "K113", "K114", "K115", "K116", "K117", "K118", "K119", "K120", "K121", "K122", "K123", "K124", "K125", "K126", "K127", "K128", "K129", "K130", "K131", "K132", "K133", "K134", "K135", "K136", "K137", "K138", "K139", "K140", "K141", "K142", "K143", "K144", "K145", "K146", "K147", "K148", "K149", "K150", "K151", "K152", "K153", "K154", "K155", "K156", "K157", "K158", "K159", "K160", "K161", "K162", "K163", "K164", "K165", "K166", "K167", "K168", "K169", "K170", "K171", "K172", "K173", "K174", "K175", "K176", "K177", "K178", "K179", "K180", "K181", "K182", "K183", "K184", "K185", "K186", "K187", "K188", "K189", "K190", "K191", "K192", "K193", "K194", "K195", "K196", "K197", "K198", "K199", "K200", "K201", "K202", "K203", "K204", "K205", "K206", "K207", "K208", "K209", "K210", "K211", "K212", "K213", "K214", "K215", "K216", "K217", "K218", "K219", "K220", "K221", "K222", "K223", "K224", "K225", "K226", "K227", "K228", "K229", "K230", "K231", "K232", "K233", "K234", "K235", "K236", "K237", "K238", "K239", "K240", "K241", "K242", "K243", "K244", "K245", "K246", "K247", "K248", "K249", "K250", "K251", "K252", "K253", "K254", "K255", "K256", "K257", "K258", "K259", "K260", "K261", "K262", "K263", "K264", "K265", "K266", "K267", "K268", "K269", "K270", "K271", "K272", "K273", "K274", "K275", "K276", "K277", "K278", "K279", "K280", "K281", "K282", "K283", "K284", "K285", "K286", "K287", "K288", "K289", "K290", "K291", "K292", "K293", "K294", "K295", "K296", "K297", "K298", "K299", "K300", "K301", "K302", "K303", "K304", "K305", "K306", "K307", "K308", "K309", "K310", "K311", "K312", "K313", "K314", "K315", "K316", "K317", "K318", "K319", "K320", "K321", "K322", "K323", "K324", "K325", "K326", "K327", "K328", "K329", "K330", "K331", "K332", "K333", "K334", "K335", "K336", "K337", "K338", "K339", "K340", "K341", "K342", "K343", "K344", "K345", "K346", "K347", "K348", "K349", "K350", "K351", "K352", "K353", "K354", "K355", "K356", "K357", "K358", "K359", "K360", "K361", "K362", "K363", "K364", "K365", "K366", "K367", "K368", "K369", "K370", "K371", "K372", "K373", "K374", "K375", "K376", "K377", "K378", "K379", "K380", "K381", "K382", "K383", "K384", "K385", "K386", "K387", "K388", "K389", "K390", "K391", "K392", "K393", "K394", "K395", "K396", "K397", "K398", "K399", "K400", "K401", "K402", "K403", "K404", "K405", "K406", "K407", "K408", "K409", "K410", "K411", "K412", "K413", "K414", "K415", "K416", "K417", "K418", "K419", "K420", "K421", "K422", "K423", "K424", "K425", "K426", "K427", "K428", "K429", "K430", "K431", "K432", "K433", "K434", "K435", "K436", "K437", "K438", "K439", "K440", "K441", "K442", "K443", "K444", "K445", "K446", "K447", "K448", "K449", "K450", "K451", "K452", "K453", "K454", "K455", "K456", "K457", "K458", "K459", "K460", "K461", "K462", "K463", "K464", "K465", "K466", "K467", "K468", "K469", "K470", "K471", "K472", "K473", "K474", "K475", "K476", "K477", "K478", "K479", "K480", "K481", "K482", "K483", "K484", "K485", "K486", "K487", "K488", "K489", "K490", "K491", "K492", "K493", "K494", "K495", "K496", "K497", "K498", "K499", "K500", "K501", "K502", "K503", "K504", "K505", "K506", "K507", "K508", "K509", "K510", "K511", "K512", "K513", "K514", "K515", "K516", "K5

third floor plan





first floor plan



## ground floor plan

