

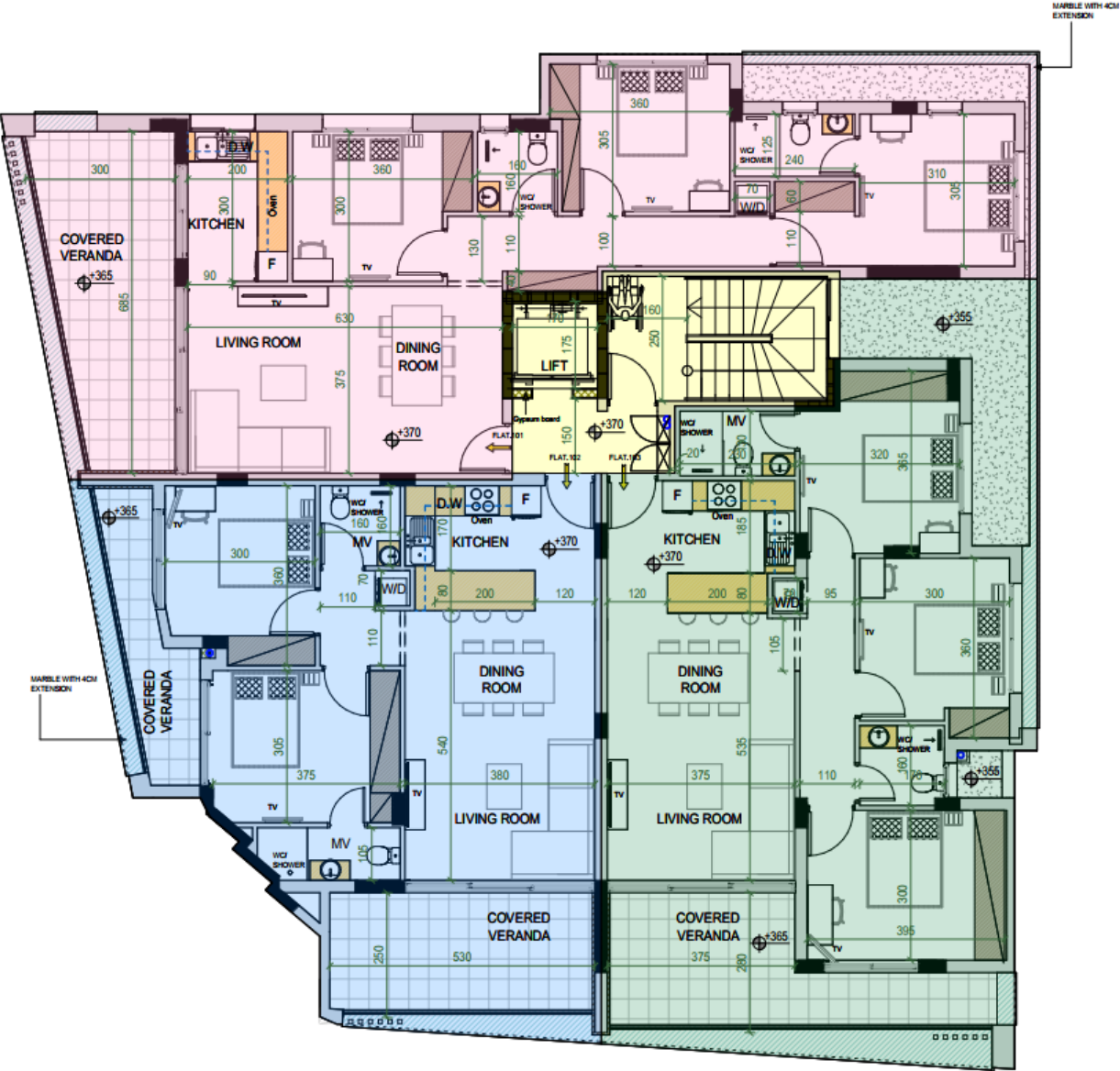
# Small building with apartments and duplex

AD# : 18681

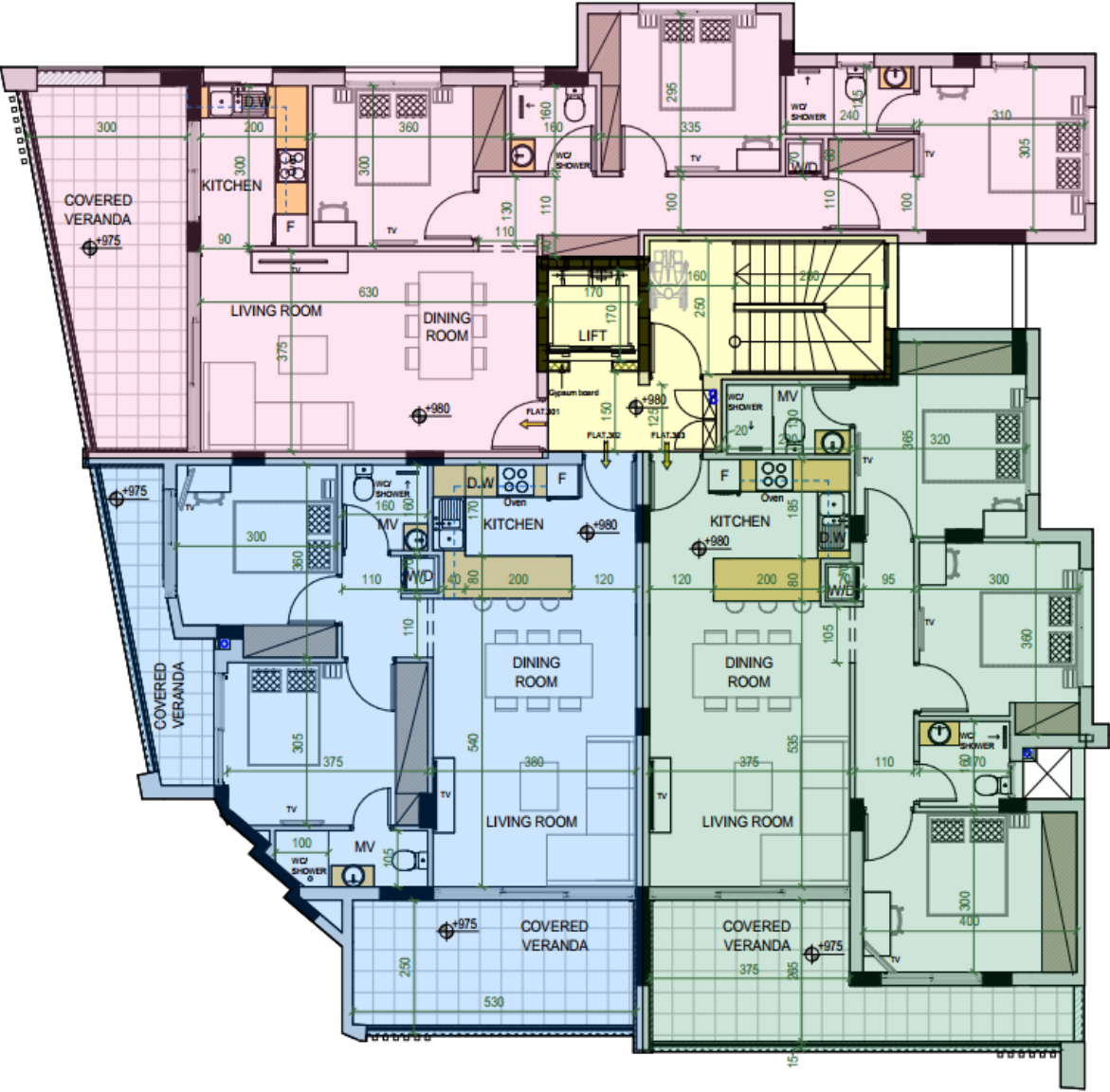
## Ground-floor



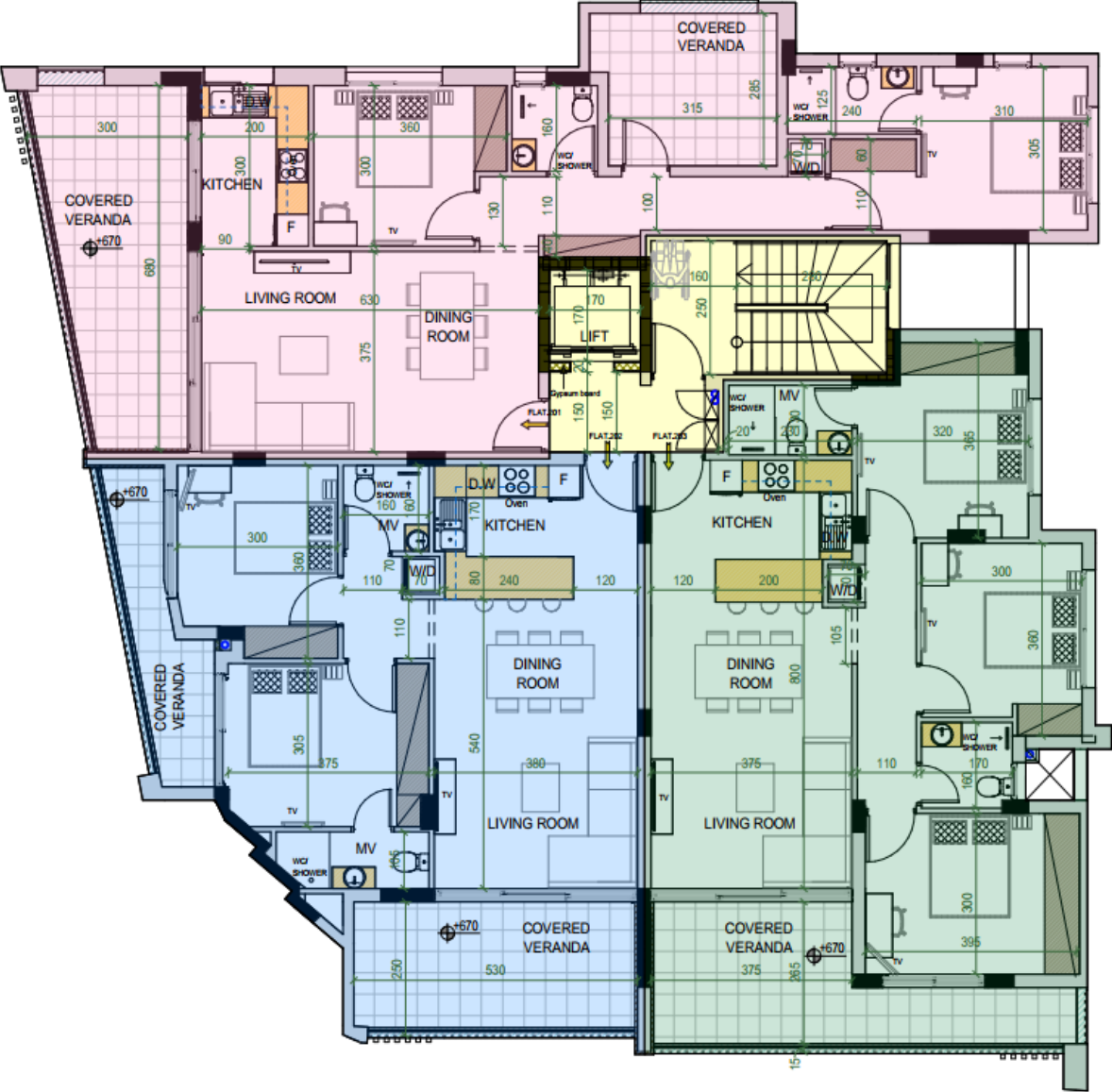
1st-floor



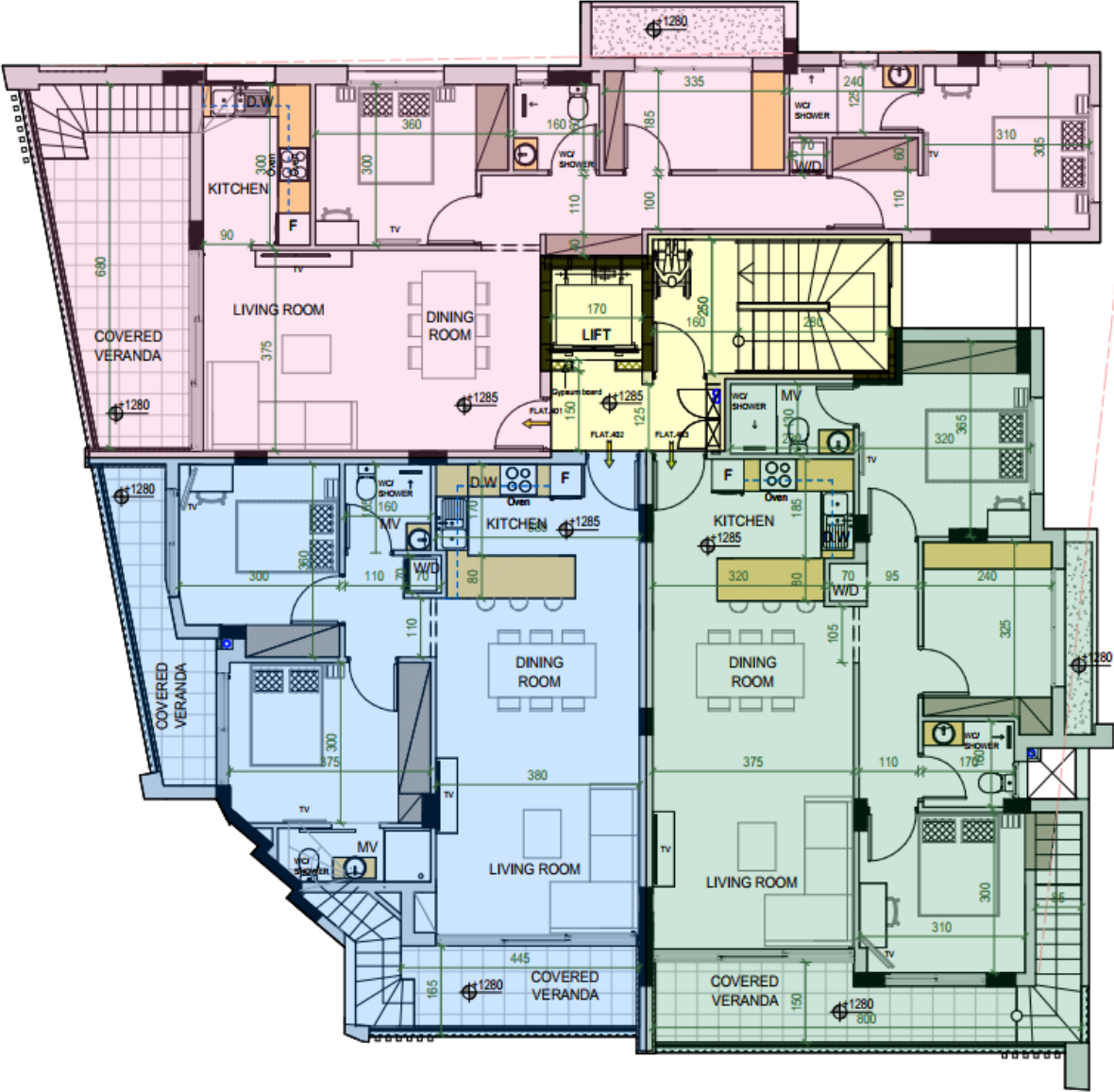
3rd-floor



2nd-floor



4th-floor





The floor plan illustrates the layout of the first floor, featuring a central corridor (1591) and several functional areas. The left side includes a large pink-shaded 'UNCOVERED VERANDA' (595 x 710) and a blue-shaded 'UNCOVERED VERANDA' (655 x 454). The central part contains a lift (170), a WC (240), and a kitchen area (1595) with a sink and stove. To the right, there are three sets of 'SOLAR WATER HEATING SYSTEM' units. The bottom right features a green-shaded 'UNCOVERED VERANDA' (705 x 595) and a 'PLAYARD' area. The plan also includes a staircase, a 'MARBLE WITH 4CM EXTENSION' area, and various dimensions for rooms and corridors.