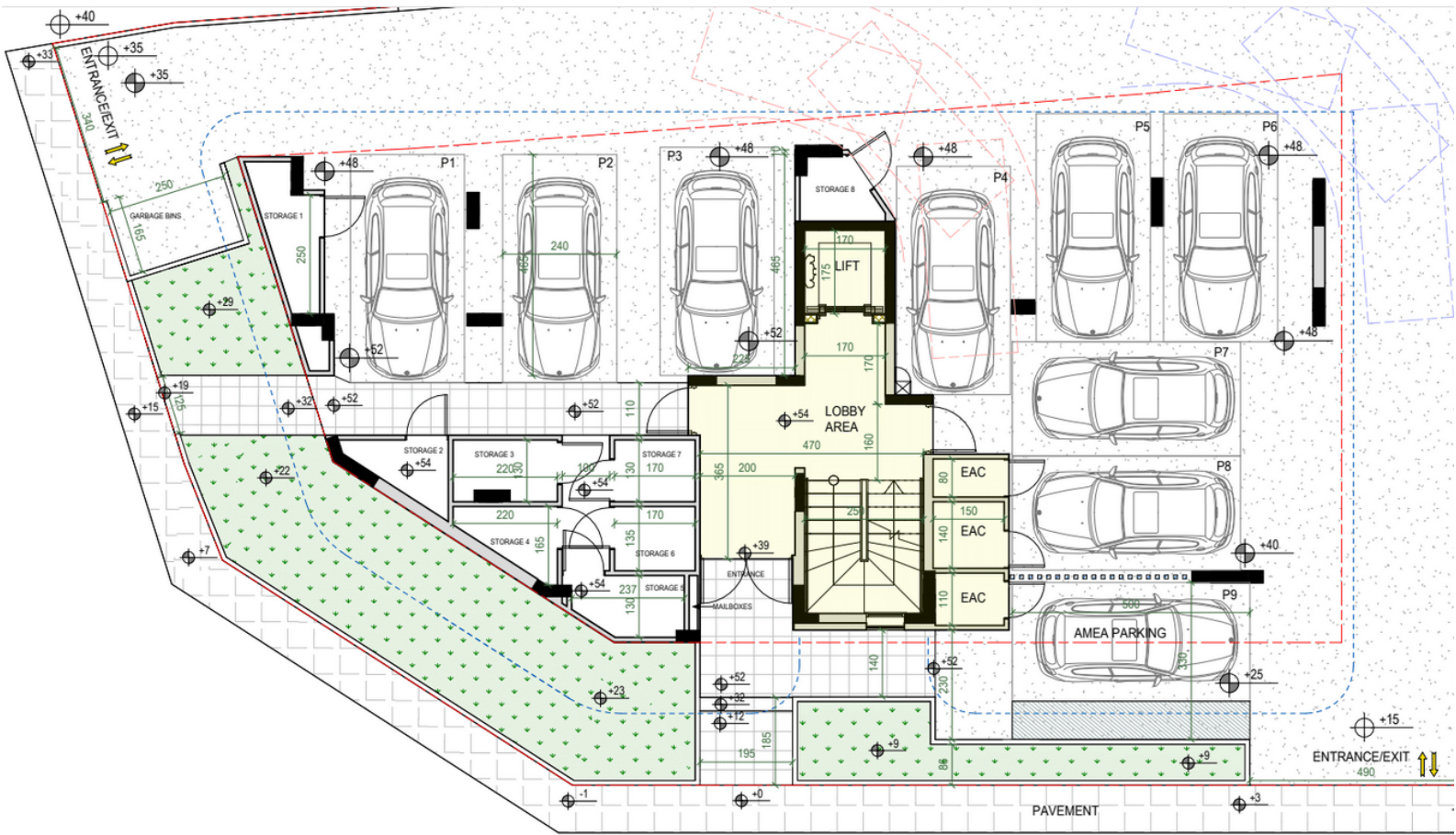


Award winning City apartments and duplex

AD# : 18682

ground floor plan



The floor plan illustrates a two-unit residential building with a central service core. The left unit (purple) and right unit (blue) are mirror images of each other. Each unit features a living room with a fireplace, a dining room, a kitchen with an island, two bedrooms, a bathroom, and a covered veranda. The central core (yellow) houses a lift, stairs, and a laundry area. Dimensions are provided for all rooms and overall unit footprints. The plan is color-coded: purple for the left unit, blue for the right unit, and yellow for the central core. Various symbols indicate doors, windows, and furniture placement.

**Unit Dimensions and Room Details:**

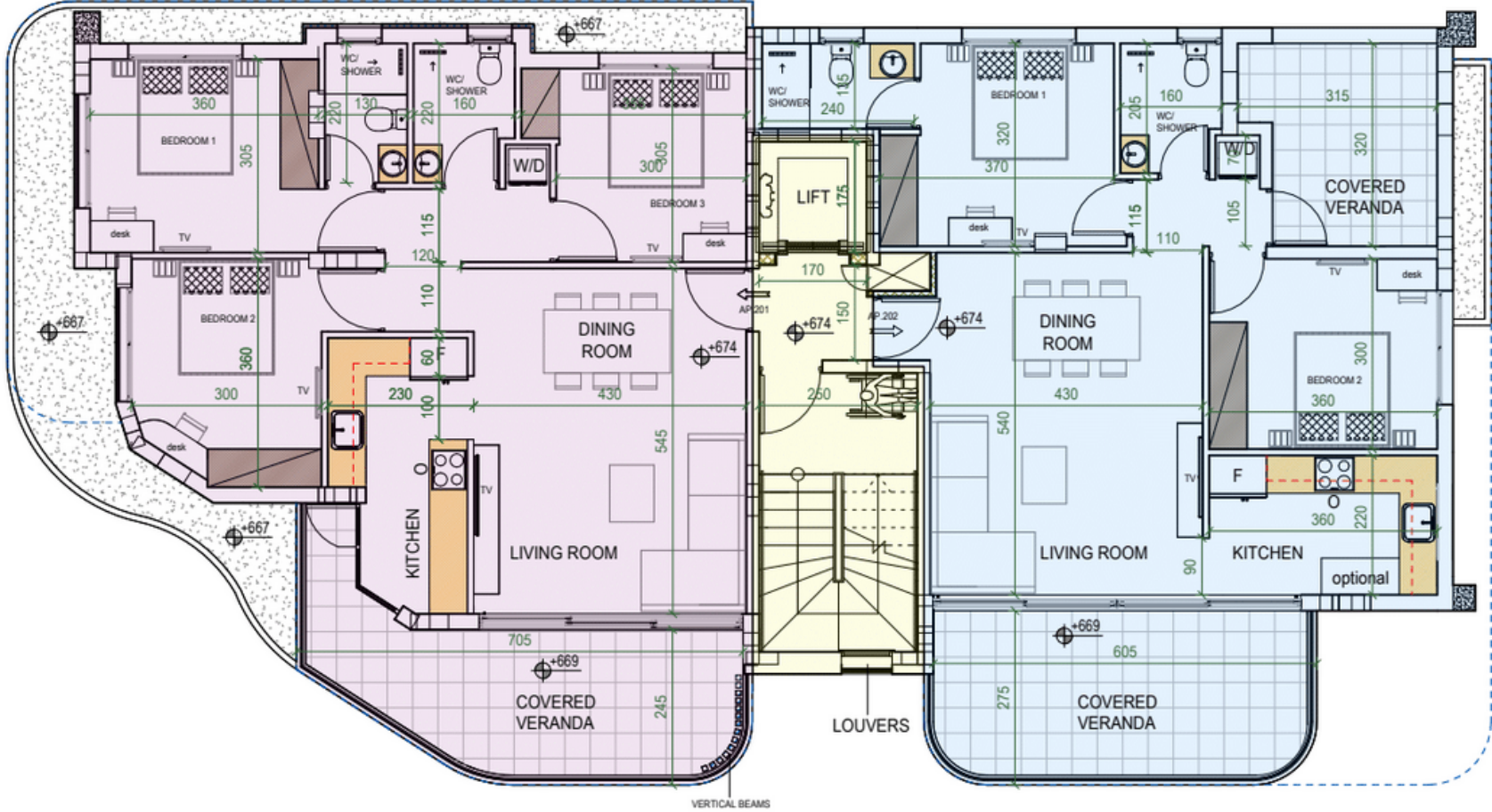
- Left Unit (Purple):**
  - Overall Footprint: 352' x 60'
  - Bedroom 1: 360' x 305'
  - Bedroom 2: 360' x 300'
  - Bedroom 3: 305' x 305'
  - Bathroom: 160' x 130'
  - Living Room: 545' x 430'
  - Dining Room: 430' x 230'
  - Kitchen: 100' x 230'
  - Covered Veranda: 245' x 100'
- Right Unit (Blue):**
  - Overall Footprint: 352' x 60'
  - Bedroom 1: 320' x 370'
  - Bedroom 2: 360' x 300'
  - Bathroom: 160' x 130'
  - Living Room: 540' x 430'
  - Dining Room: 430' x 230'
  - Kitchen: 220' x 100'
  - Covered Veranda: 275' x 100'
- Central Core (Yellow):**
  - Lift: 175' x 170'
  - Stairs: 170' x 150'
  - Laundry: 245' x 110'

**Other Features:**

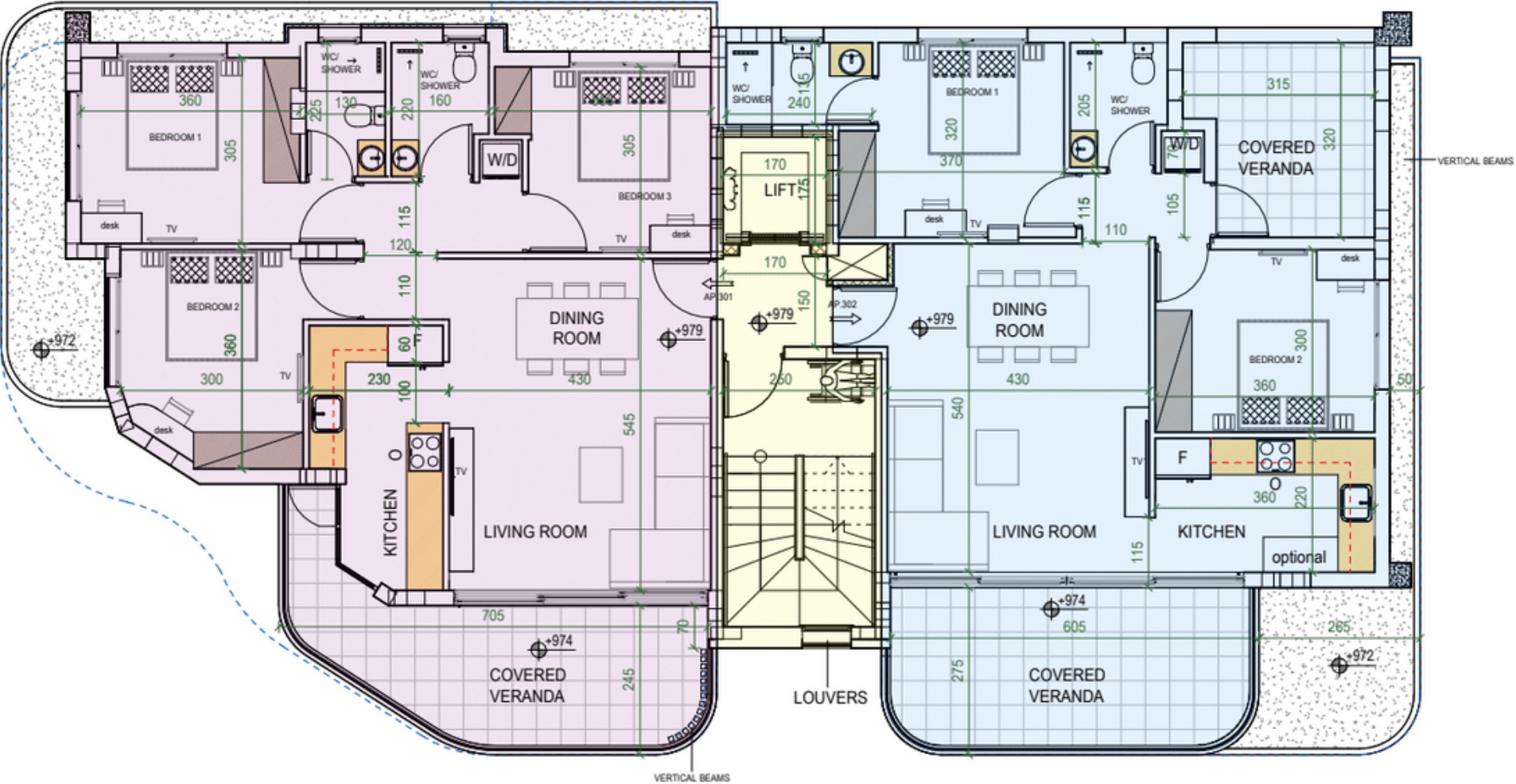
- Vertical Beams:** Indicated at the bottom of the plan.
- Louvers:** Located on the exterior walls of the central core.
- Doors:** Indicated by arcs and arrows.
- Windows:** Indicated by double lines.
- Furniture:** Indicated by simple symbols (e.g., sofa, bed, desk, TV, stove, sink, toilet, shower, bathtub).



2nd floor plan

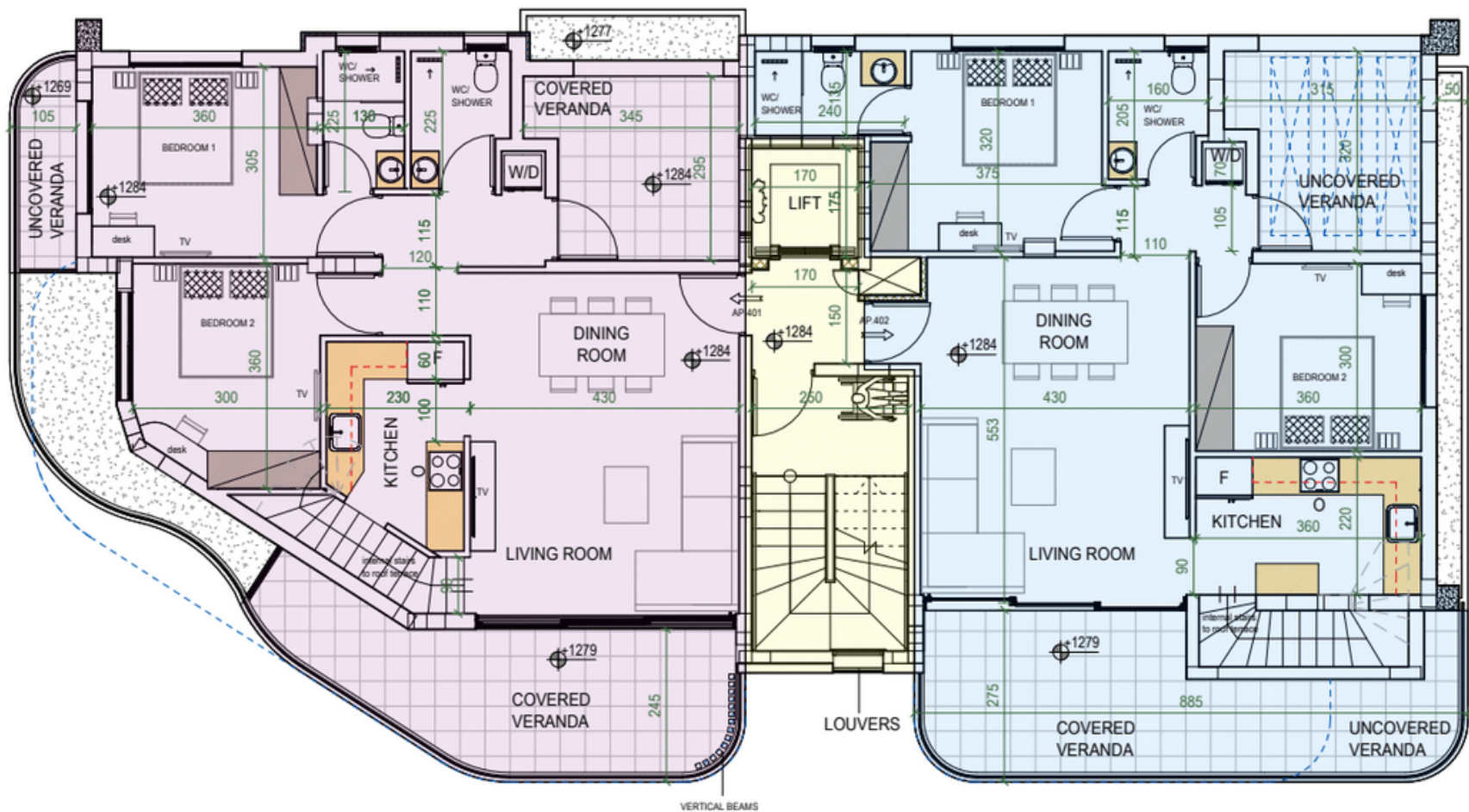


third floor plan





4rth floor duplex apartment



roof garden

